

WRECKAGE INSPECTION PHOTOS

AUGUST 27, 2009

AT

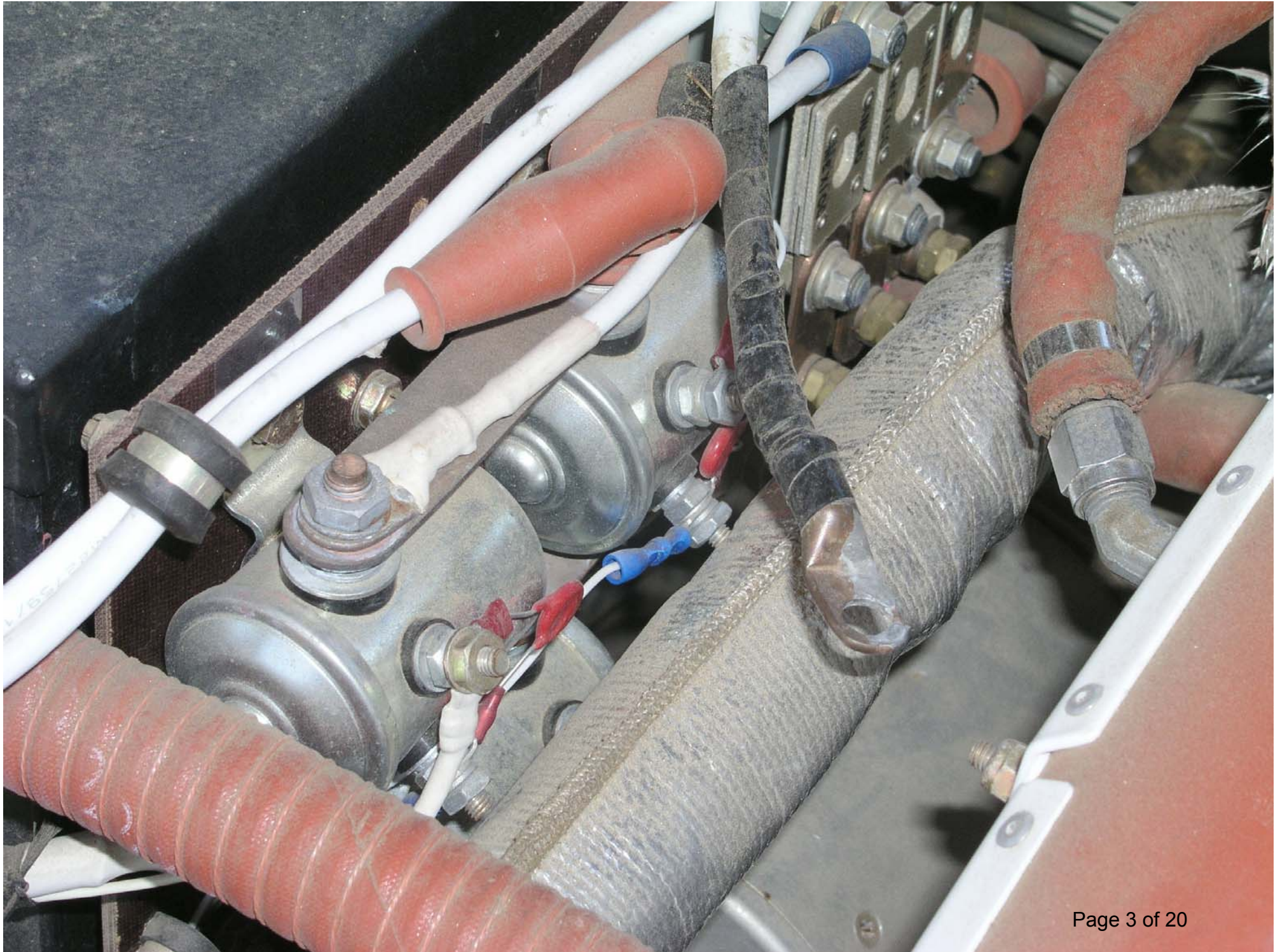
AIRCRAFT RECOVERY SERVICE
11015 BUTTERFIELD STAGE RD
LITTLEROCK, CA

CASE:

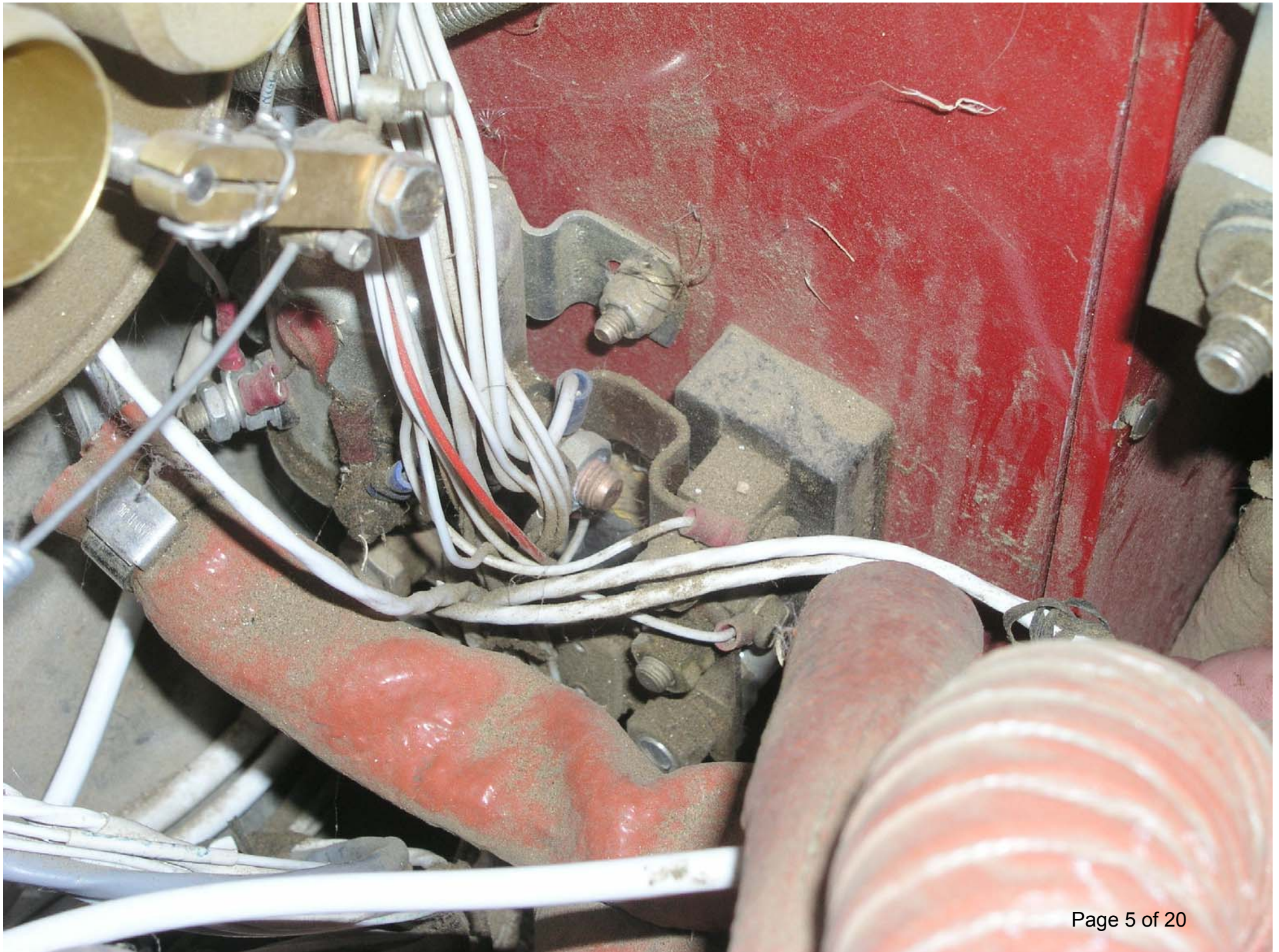
HOPKINS V. BARTLE

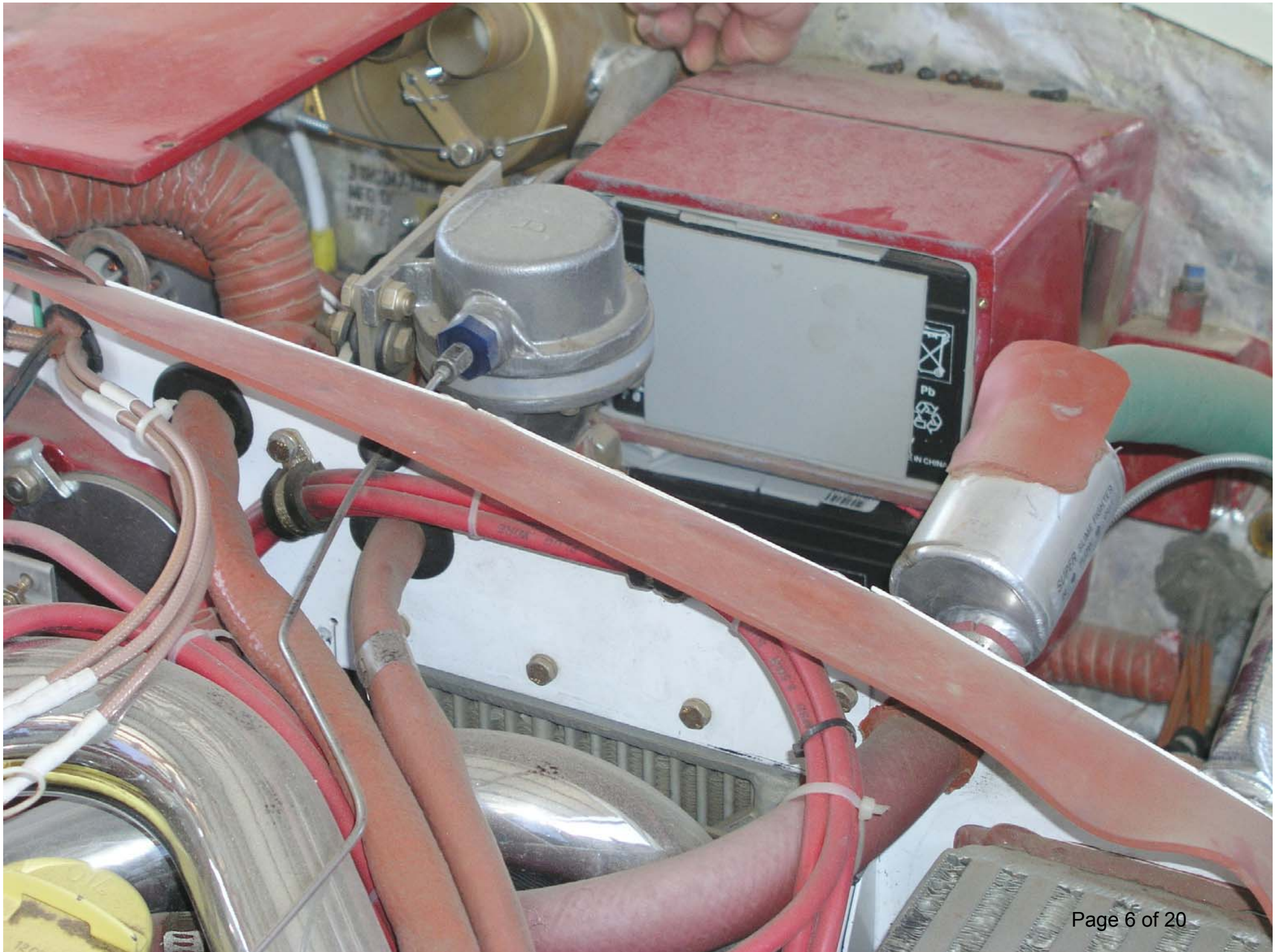
ROBERT L. NUCKOLLS III
DOUGLAS-NUCKOLLS LLC
MEDICINE LODGE, KS
(316) 209-7528



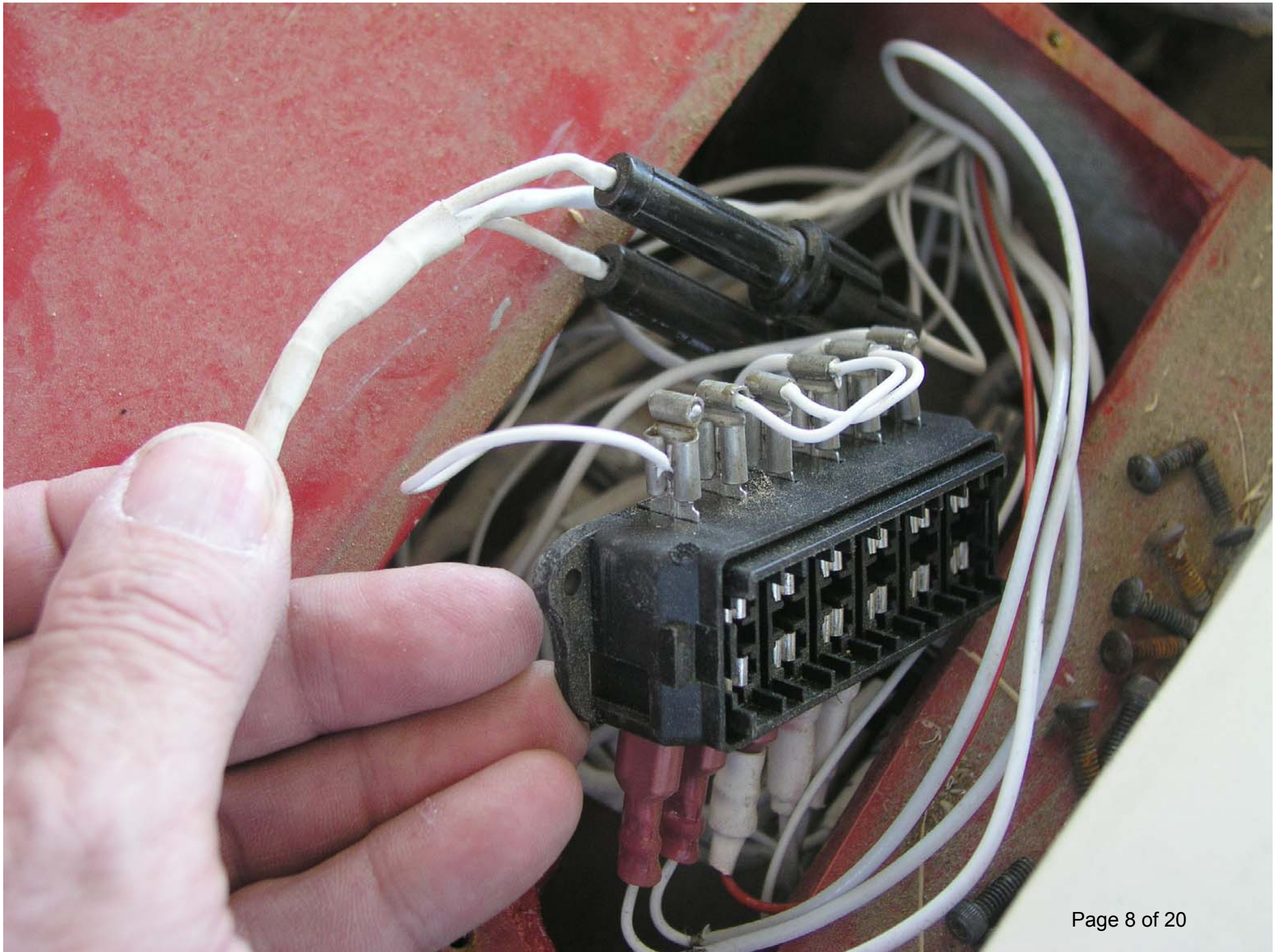


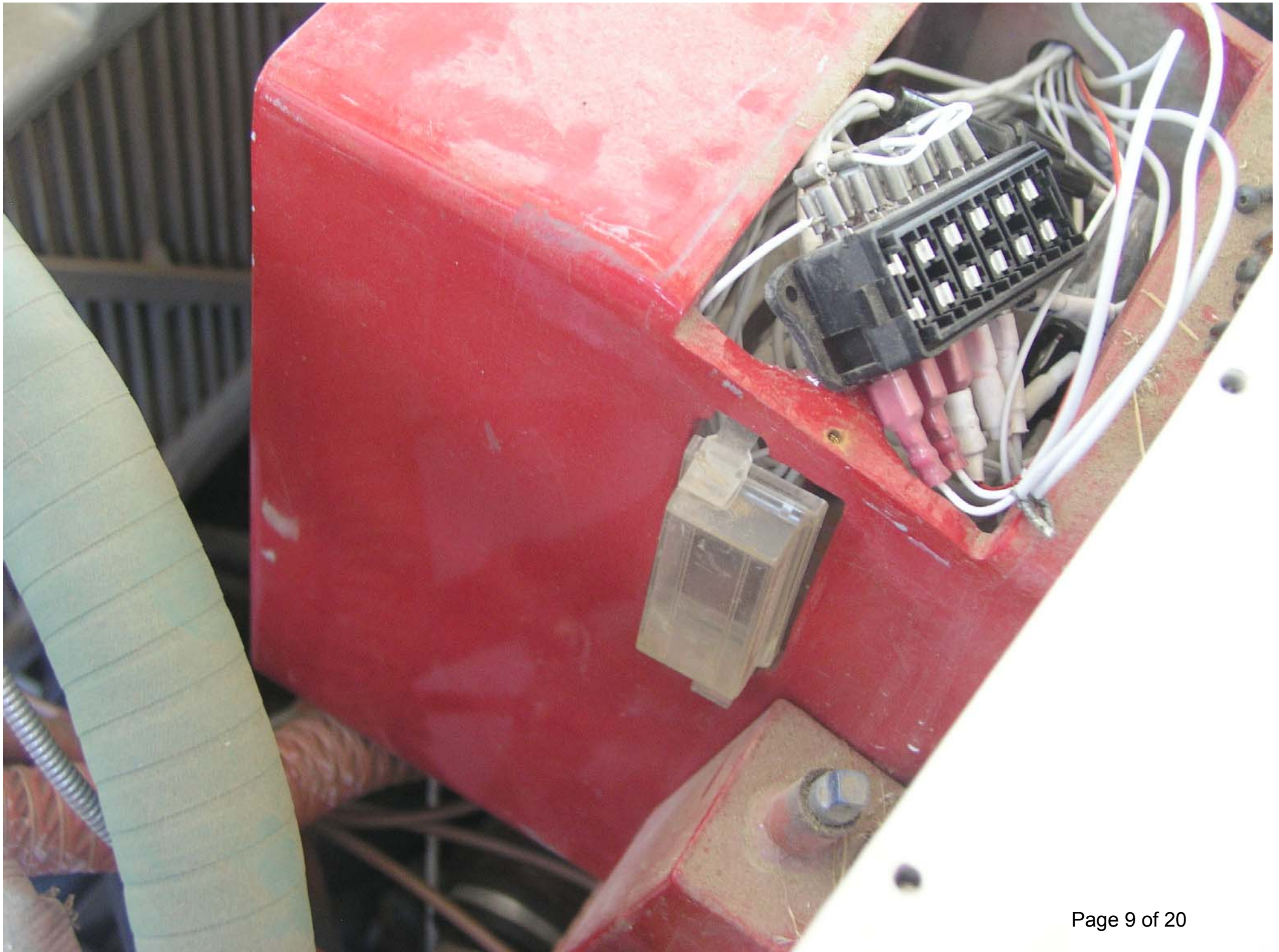






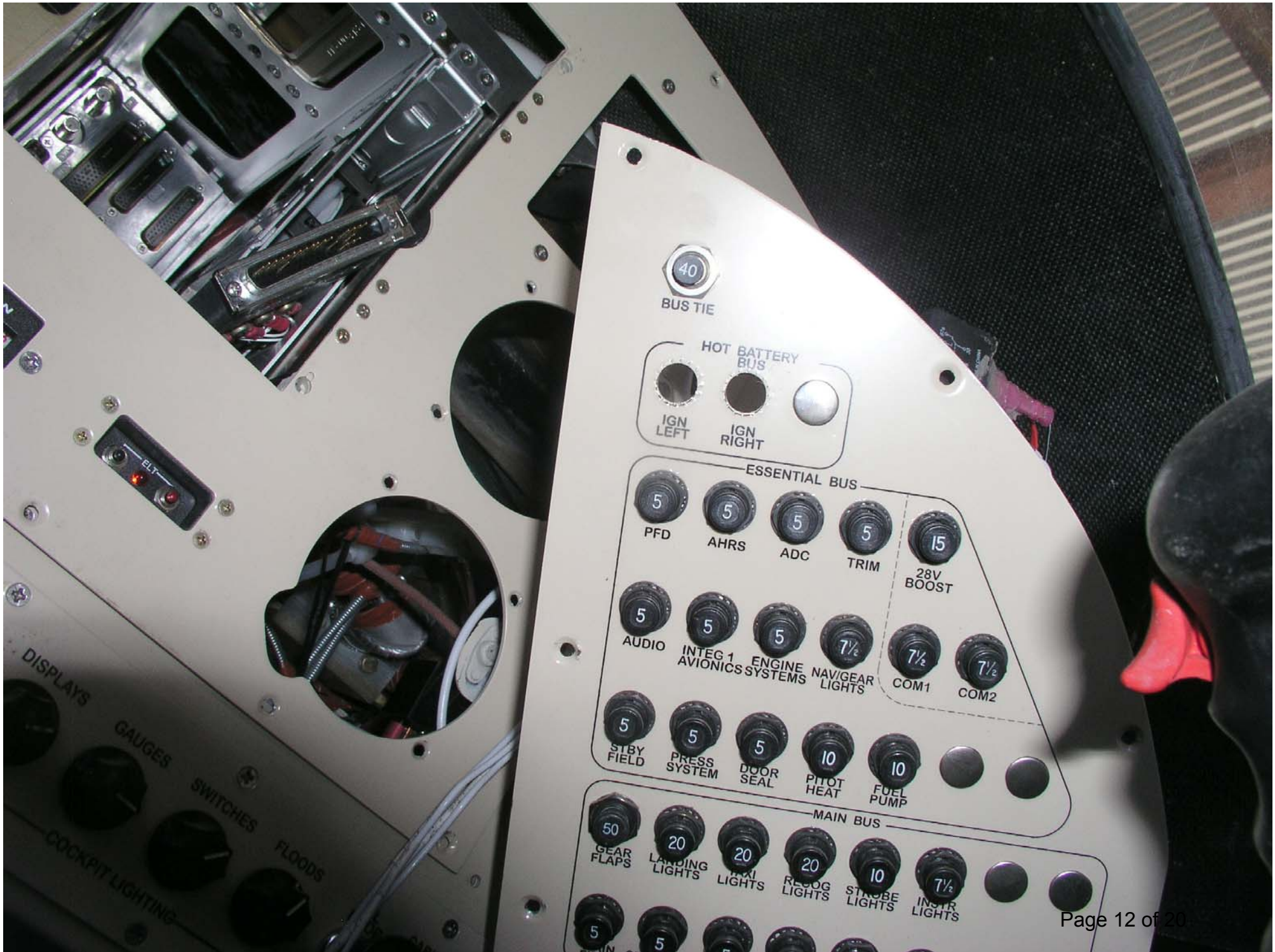












40

BUS TIE

HOT BATTERY BUS

IGN LEFT

IGN RIGHT

ESSENTIAL BUS

5

PFD

5

AHRS

5

ADC

5

TRIM

15

28V BOOST

5

AUDIO

5

INTEG 1 AVIONICS SYSTEMS

5

ENGINE SYSTEMS

7 1/2

NAV/GEAR LIGHTS

7 1/2

COM1

7 1/2

COM2

5

STBY FIELD

5

PRESS SYSTEM

5

DOOR SEAL

10

PITOT HEAT

10

FUEL PUMP

MAIN BUS

50

GEAR FLAPS

20

LANDING LIGHTS

20

TAIL LIGHTS

20

REC LOG LIGHTS

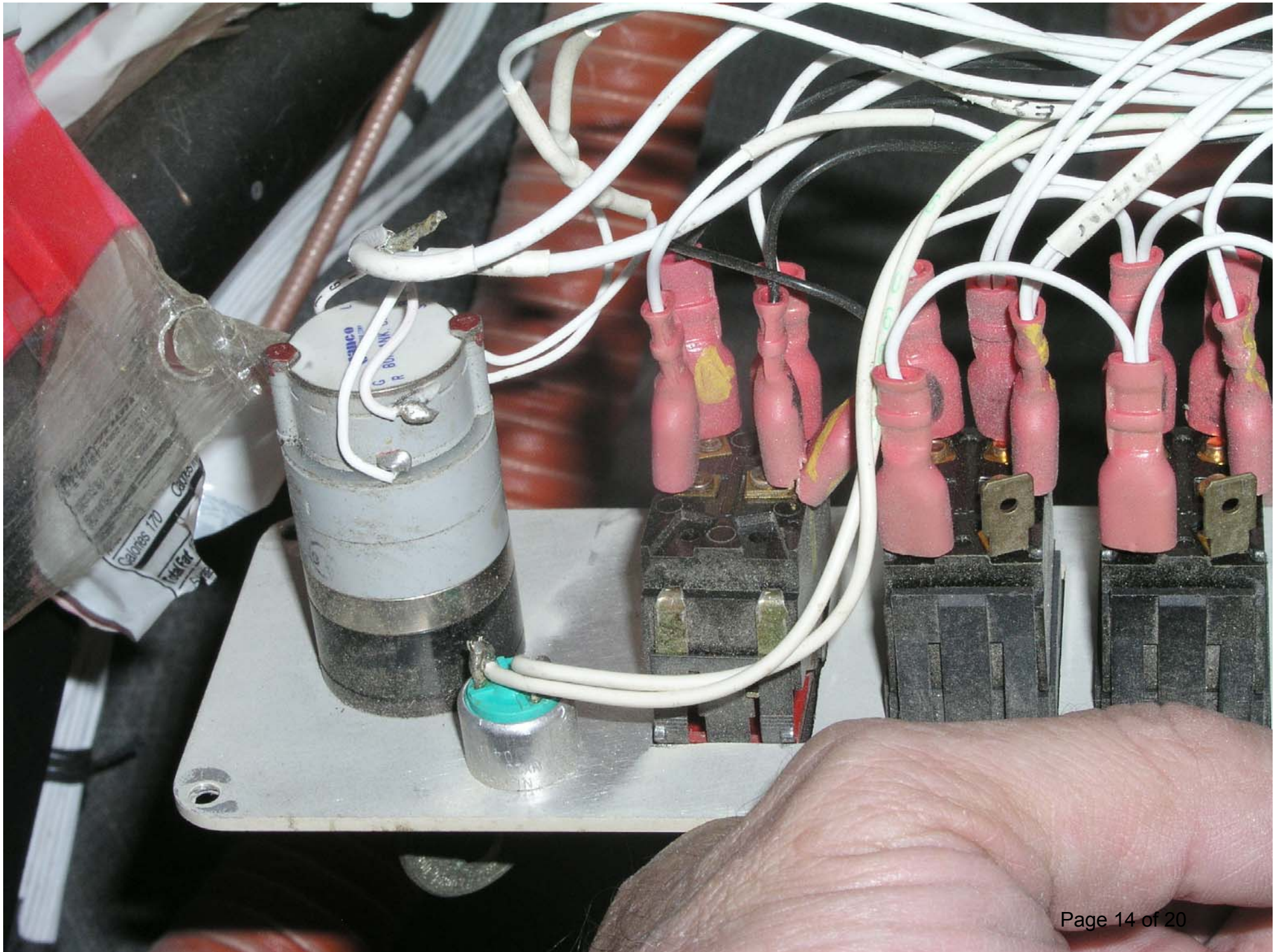
10

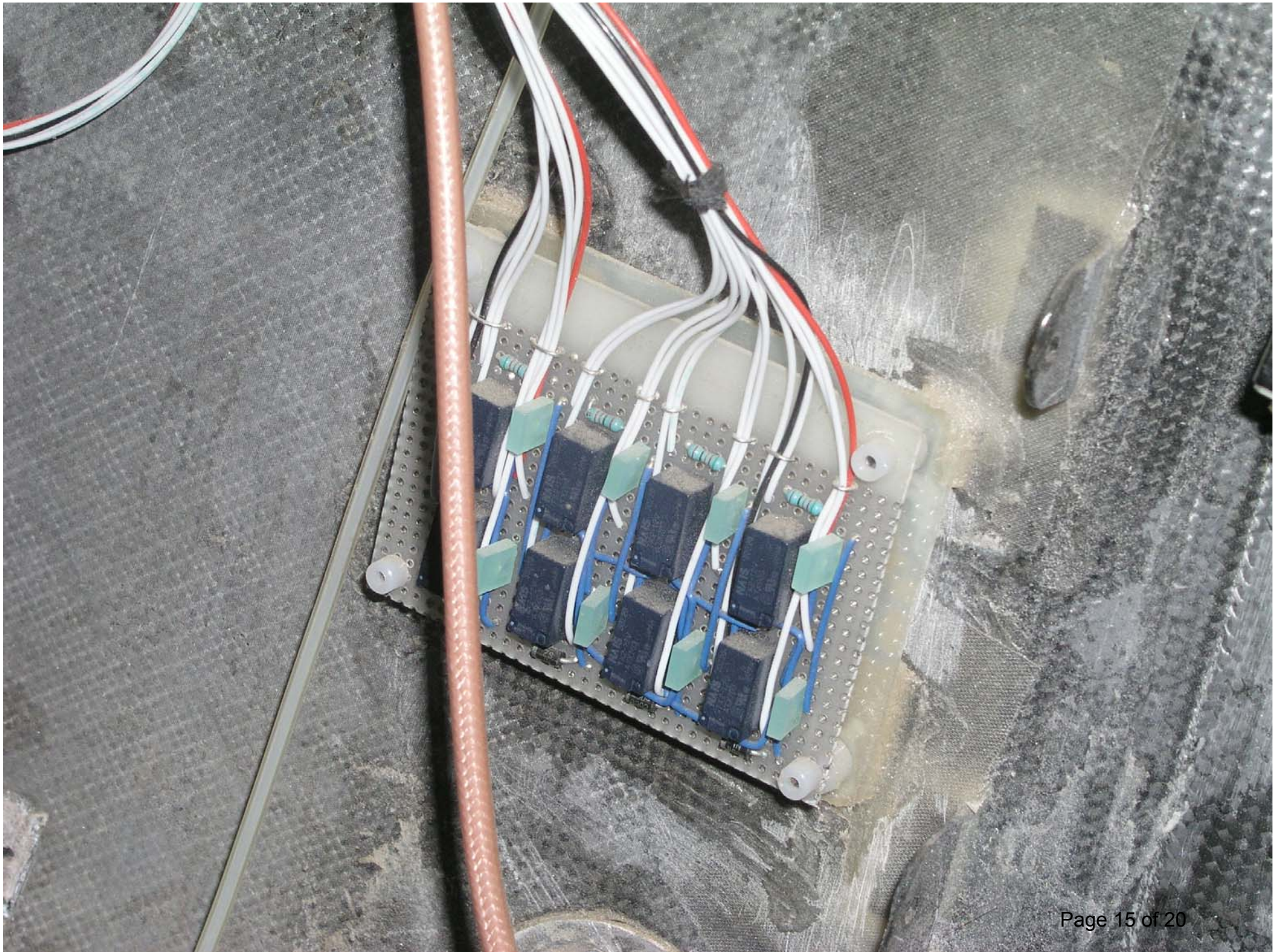
STROBE LIGHTS

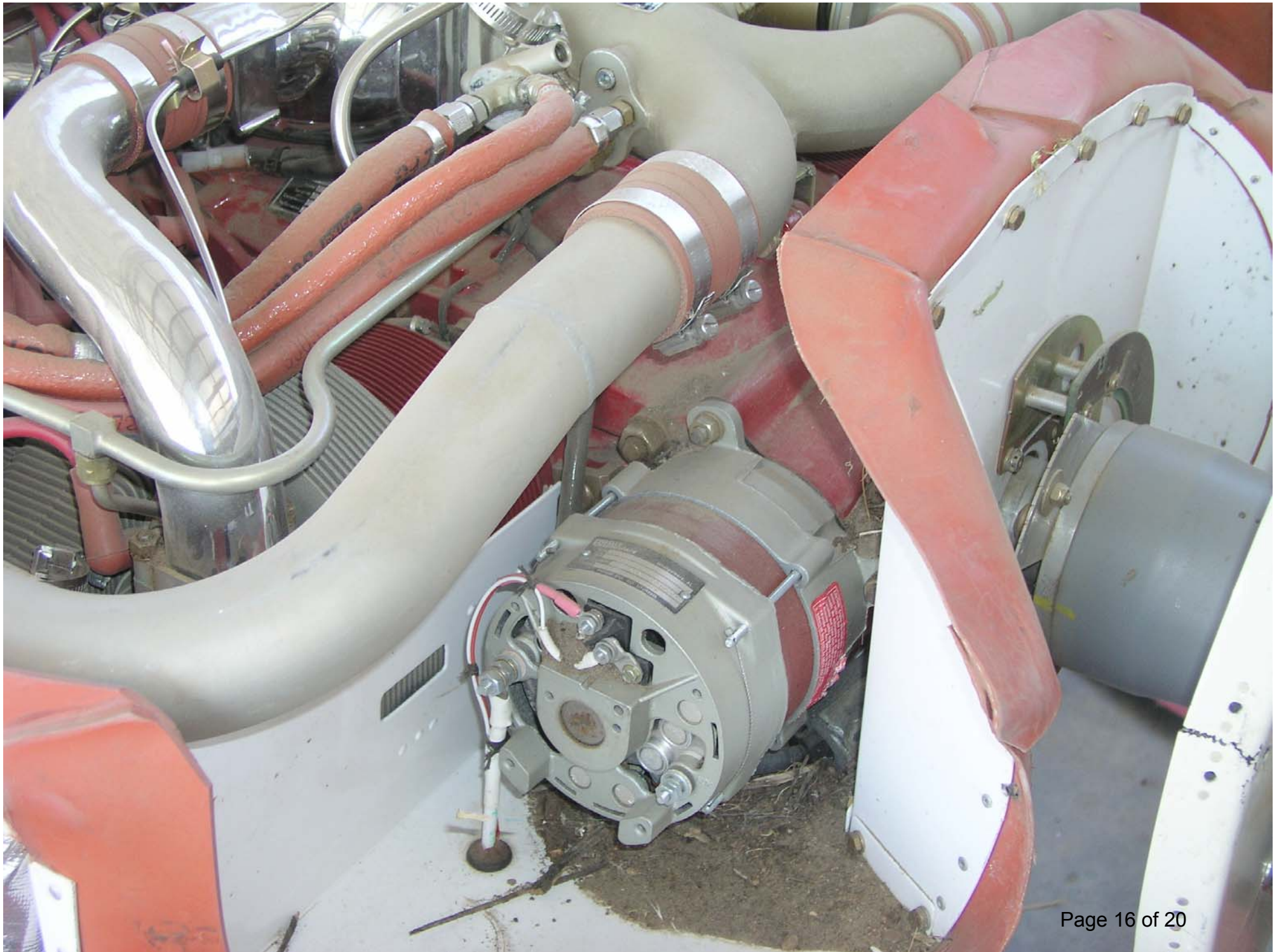
7 1/2

INSTR LIGHTS











UNDESIRABLE INSTALLATION INSTRUCTIONS
Do not use this motor and this motor's accessories on any boat, trailer or other vessel that does not have the proper weight and distribution. The motor is designed for use on boats with a maximum weight of 3500 lbs (1588 kg).
A-2330-9
only to
LUBRICATED SURFACES ONLY.
This motor is designed for use on boats with a maximum weight of 3500 lbs (1588 kg) and should not be used on any other vessel. The motor is designed for use on boats with a maximum weight of 3500 lbs (1588 kg) and should not be used on any other vessel.

