

TECHNICAL PUBLICATION REVISION

REVISION No.	ENGINE MODEL	PUBLICATION No.	PUBLICATION DATE
PC306-2A	O,LO,TO-360 Series	PC306-2	August, 1981
The page(s) furnished herewith are intended to replace the corresponding page(s) of the publication indicated above.			
Remove		Insert	
August, 1981 2-3, 2-7		June, 1986 2-3, 2-7	

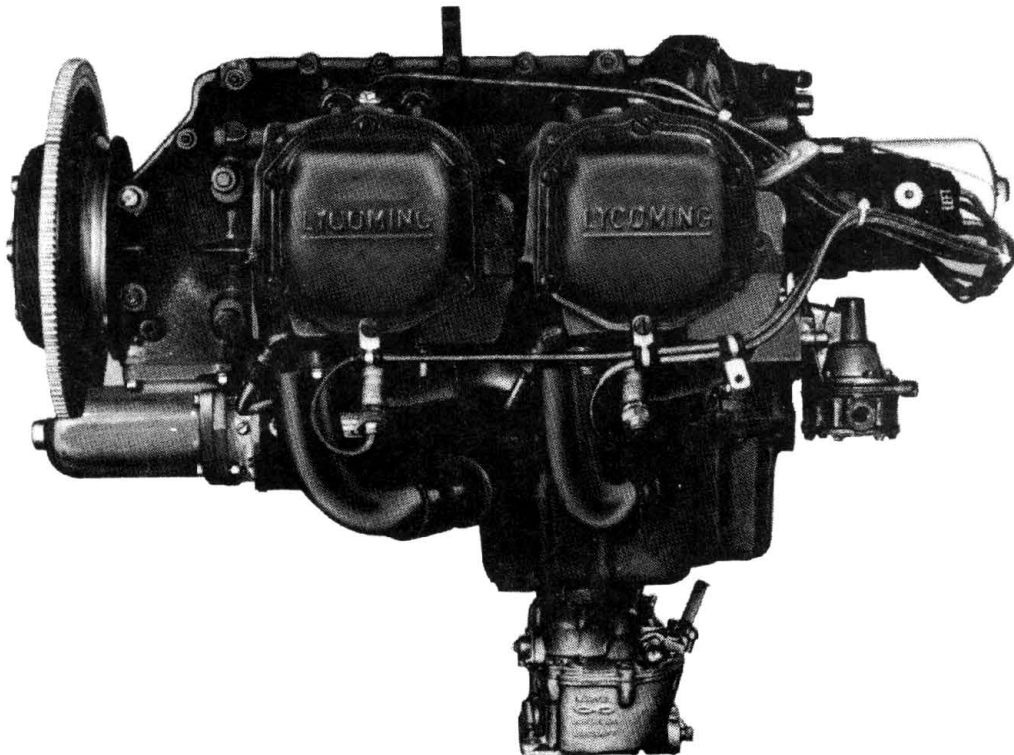
Courtesy of Bomar Flying Service
www.bomar.biz

PARTS CATALOG

PC-306-2

**Textron Lycoming O, LO, TO,-360 Series
Wide Cylinder Flange Models**

AIRCRAFT ENGINES



PRICE \$18.00

AUGUST 1981

TEXTRON Lycoming

Reciprocating Engine Division/
Subsidiary of Textron Inc.

652 Oliver Street
Williamsport, PA 17701 U.S.A.
717/323-6181

TO-360-F1A6D

The TO-360-F1A6D model aircraft engine is not included in the general assembly list of this parts catalog. For parts peculiar to the TO-360-F1A6D model engine, use all parts listed under the TO-360-C1A6D column except for the following parts which are different.

Ref. No.	Part No.	Description	Qty. Per Eng.
— Page 1-1 - Figure 1			
1	LW-15880	CRANKCASE ASSEMBLY	1
21	67556	STUD, 5/16-18 x 2.00 long (Driven height of studs 1.31)	4
— Page 1-3 - Figure 2			
5	LW-14796	GAGE ASSY., Oil level	1
— Page 2-9 - Figure 15			
5	71140	FITTING, Breather	1
— Page 5-1 - Figure 26			
1	LW-10185	REGULATOR, 12 V., full transistor	1
— Page 5-5 - Figure 29			
2	LW-14308	ALTERNATOR, 12 V. - 60 Amp., externally grounded (ALY-8420)	1
— Page 7-1 - Figure 35			
18	LW-15887	PIPE, Exhaust, tail	1
— Page 7-3 - Figure 36			
1	LW-16864	TRANSITION, WASTEGATE AND ROD END ASSY.	1
7	LW-16863	TRANSITION AND WASTEGATE ASSY.	1

INTRODUCTION

This illustrated Parts Catalog provides parts coverage for all current models of O, LO, TO-360 wide cylinder flange (WCF) series engines. These wide cylinder flange engines are identified by the suffix "A" on the engine serial number (e.g. L-20650-36A). The serial number as well as the model designation may be found on the engine nameplate on the oil sump. For parts information of the O-360 conventional (or narrow) cylinder flange engines, refer to the Parts Catalog PC-106 to those parts marked STD (meaning standard) for standard or narrow cylinder flange.

Group Assembly Section: This section lists major assemblies and sub-assemblies in the general order of engine build-up.

Service Kit Section: Seal and gasket sets and cylinder, piston and ring kits are provided in this section.

Numerical Index: Quick determination of part location in the catalog is possible thru this section when only the part number is known.

Oversize and Undersize Parts: Procurable oversize and undersize parts are listed preceding the main group assembly parts list.

Vendor Accessories: Parts coverage of Vendor Accessories used on Textron Lycoming engines may be found in the appropriate Vendor's Parts Catalog. A list of the publications appear in the latest edition of Textron Lycoming Service Letter No. L114.

SERVICE BULLETINS, INSTRUCTIONS AND LETTERS

Although the information in this catalog is up-to-date at the time of publication, user are urged to keep abreast of later information through Textron Lycoming Service Bulletins, Instructions and Letters which are available from all Textron Lycoming distributors or from the factory by subscription. Consult the latest edition of Service Letter No. L114 for Subscription information.

NOTE

The illustrations, pictures and drawings shown in this publication are typical of the subject matter they portray; in no instance are they to be interpreted as examples of any specific engines, equipment or part thereof.

TABLE OF CONTENTS

SECTION	PAGE
Introduction	i
Table of Contents	ii
Oversize and Undersize Parts Listing	iii
1. CRANKCASE, CRANKSHAFT AND CAMSHAFT GROUP	
Crankcase Assembly	1-1
Oil Level Gage Assemblies	1-3
Crankshaft, Camshaft and Related Parts	1-5
Crankcase Related Parts	1-7
Propeller Governor Drive (Crankcase)	1-8
Crankshaft Idler Gears and Tachometer Drive	1-9
Crankcase Attaching Parts	1-11
Starter Ring Gear Support Assembly	1-13
2. ACCESSORY HOUSING AND RELATED PARTS	
Accessory Housing Assembly	2-1
Oil Pump and Accessory Housing Attaching Parts	2-3
Propeller Governor Oil Line	2-4
Propeller Governor Drives and Covers	2-5
Fuel Pump Assembly and Attaching Parts	2-7
Vacuum Pump, Fuel Pump Drives and Covers	2-8
Oil Pressure Screen and Oil Cooler Bypass Valve	2-9
3. CYLINDER, PISTON AND VALVE TRAIN	
Connecting Rods, Pistons and Ring Assemblies	3-1
Cylinder Assembly	3-2
Cylinder Related Parts	3-3
Valve Assembly	3-5
Cylinder Head Drain Tubes and Intercylinder Cooling Baffles	3-6
4. IGNITION SYSTEM	
Magneto Drives and Magnetos	4-1
Magneto Drives and Magnetos (Dual Magnetos)	4-3
Ignition Harness and Lead Assembly (Avco Lycoming)	4-5
Ignition Harness and Lead Assembly (Slick)	4-7
Spark Plugs	4-9
5. ELECTRICAL SYSTEM	
Voltage Regulators, Relays, Alternators and Generator Drive Belts	5-1
Generator Mounting and Attaching Parts	5-2
Alternator Mounting and Attaching Parts	5-3
Generator and Alternator Assembly	5-5
Starter Motor and Attaching Parts	5-6
6. OIL SUMP AND INDUCTION SYSTEM	
Oil Sump Assembly and Oil Suction Screen	6-1
Intake Pipe Assembly	6-2
Carburetor Assembly	6-3
Priming System	6-5
7. TURBOCHARGER AND EXHAUST SYSTEM	
Exhaust Manifolding	7-1
Transition, Wastegate and Rod End Assembly	7-3
Turbocharger Assembly and Related Parts	7-5
Turbocharger Inlet Hoses and Related Parts	7-7
Oil Drain Tubes, Hoses and Related Parts	7-9
8. SERVICE KIT SECTION	8-1
9. NUMERICAL INDEX	9-1

LO, TO-360 SERIES WIDE CYLINDER FLANGE

Oversize and Undersize Parts Listing

PART NO.	DESCRIPTION	OVERSIZE							UNDERSIZE		
		P05	P075	P10	P125	P15	P20	P30	M03	M06	M10
76077	GUIDE, Valve intake	X		X			X	X			
61681	GUIDE, Valve intake	X		X			X	X			
66796	INSERT, Spark plug			X							
69260	INSERT, Spark plug			X							
69796	DOWEL, Crankshaft bearing	X									
LW-10647	DOWEL, Crankshaft bearing	X		X							
71903-A, -B	BUSHING, Counterweight	SEE SERVICE INSTRUCTION NO. 1143 FOR SIZE.									
72057	SEAT, Intake valve			X			X	X			
LW-12688	SEAT, Intake valve			X			X	X			
72058	SEAT, Exhaust valve			X			X	X			
71894	SEAT, Exhaust valve			X			X	X			
72060	BUSHING, Propeller flange	X		X		X	X				
75560	BUSHING, Propeller flange	X		X			X				
75657	BUSHING, Propeller flange	X		X			X				
72061	BUSHING, Propeller flange	X		X		X	X				
72155	BUSHING, Propeller flange	X		X		X	X				
72062	BUSHING, Propeller flange	X		X		X	X				
75561	BUSHING, Propeller flange	X		X			X				
75656	BUSHING, Propeller flange	X		X			X				
73810	BUSHING, Crankshaft counterweight	X	X	X	X	X					
74230	GUIDE, Valve exhaust	X		X			X	X			
LW-14045	GUIDE, Valve exhaust	X		X			X	X			
LW-13521	BEARING, Connecting rod			X					X	X	X
LW-13884	BEARING, Crankshaft front								X	X	X
LW-13885	BEARING, Crankshaft front								X	X	X
LW-11021	BEARING, Crankshaft								X	X	X

Studs available in P03, P07 and P12.

NOTE

When ordering oversize or undersize parts, be sure to specify the required oversize or undersize dimension along with the proper part number. For example: to order bearing LW-13521 in .003 undersize, order part number LW-13521-M3. Oversize code is "P" while undersize code letter is "M". These letters are then followed by the numbers designating the size in thousandths of an inch.

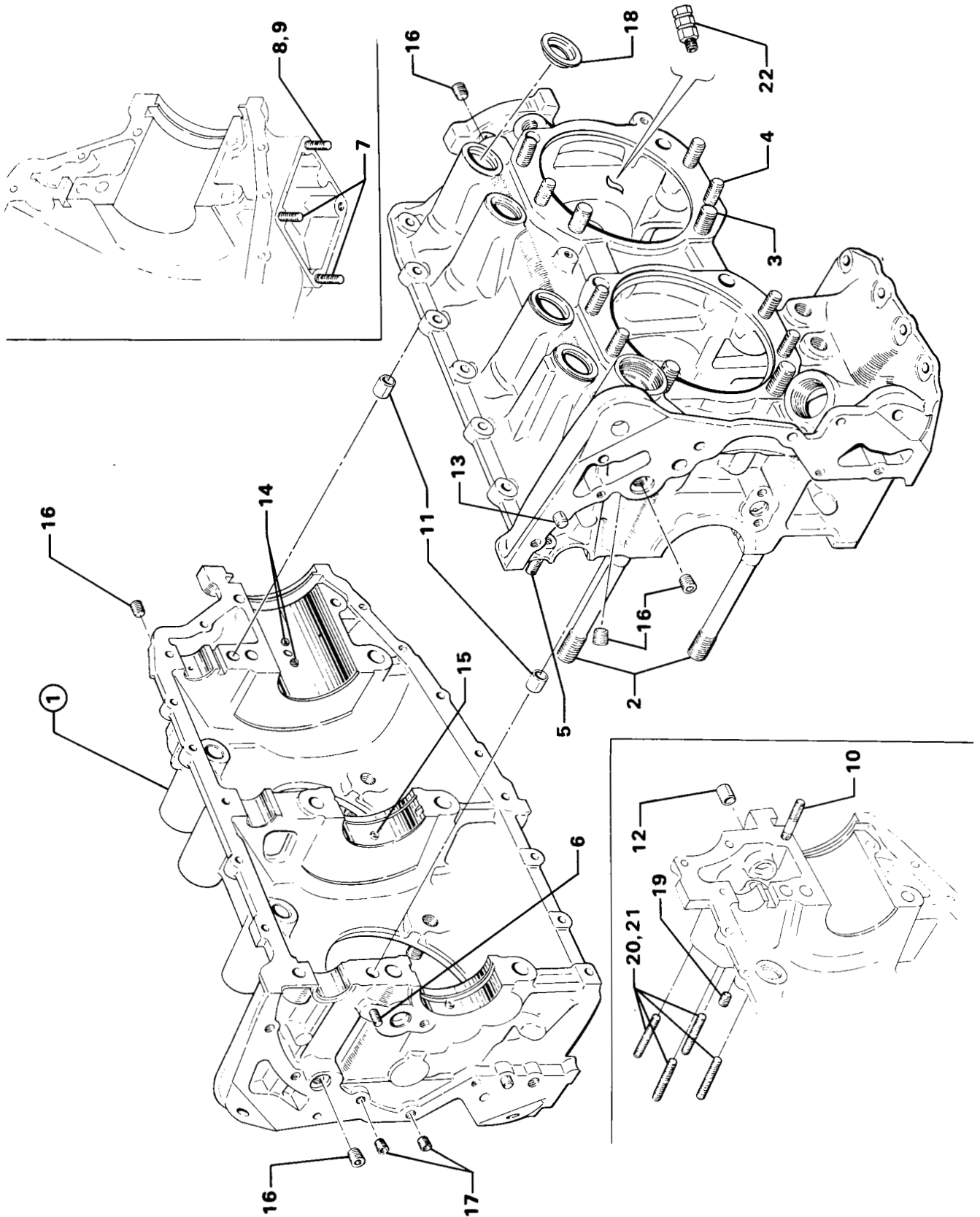


Figure 1 Crankcase Assembly

CRANKCASE, CRANKSHAFT AND CAMSHAFT GROUP
OIL LEVEL GAGE ASSEMBLIES

FIG. REF.	PART NUMBER	DESCRIPTION	ON ALL	QUANTITY PER ASSEMBLY																	
				O-360										LO-360				TO-360			
				B 2 A	C 1 A	C 1 C	C 1 E	C 1 F	C 2 A	C 2 C	C 2 E	D 2 A	F 1 A 6					A 1 G 6 D			
1	75735	TUBE, Oil level gage, short			1	1	1				1	1									
	75767	TUBE, Oil level gage, intermediate					1	1			1	1	1	1							
	75736	TUBE, Oil level gage, long								1							1			1	
2	78626	TUBE ASSY., Oil level gage, 15.13 long																		1	
	LW-16580	TUBE ASSY., Oil level gage, 12.81 long												1							
3	72059	GASKET, Oil level gage	1																		
4	74068	RING, Oil level gage seal			1	1	1			1	1	1									
	74065	RING, Oil level gage seal					1	1		1	1	1	1	1			1			1	
5	LW-14759	GAGE ASSY., Oil level			1	1	1			1	1										
	LW-14780	GAGE ASSY., Oil level					1	1		1	1	1	1								
	LW-14758	GAGE ASSY., Oil level							1												
	LW-14764	GAGE ASSY., Oil level, intermediate																		1	
	LW-14782	GAGE ASSY., Oil level																		1	
	LW-14790	GAGE ASSY., Oil level																	1		
	LW-14795	GAGE ASSY., Oil level												1							
6	72842	PLUG, Oil level gage			1	1	1			1	1	1									
	72844	PLUG, Oil level gage					1	1		1	1	1	1	1				1		1	

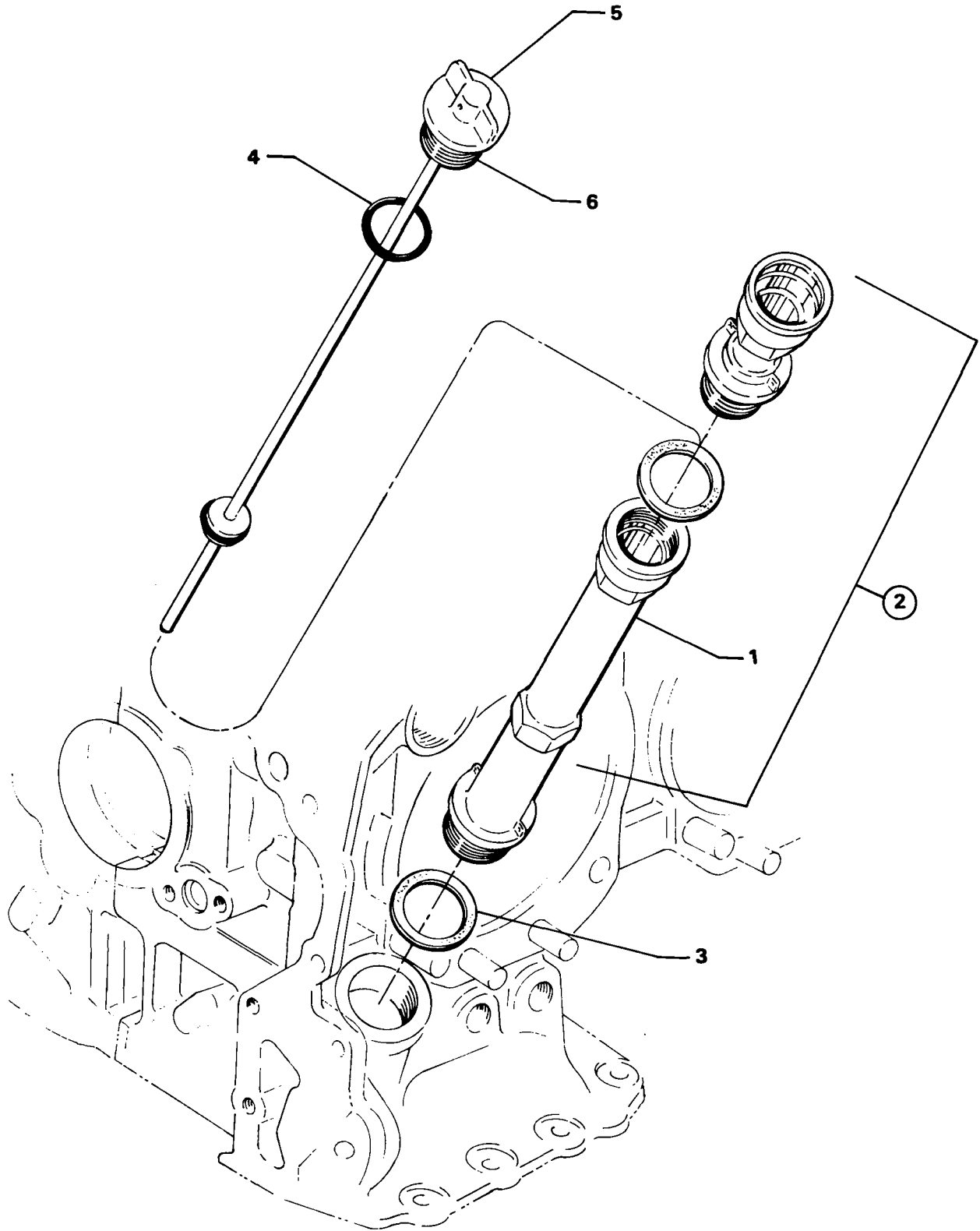


Figure 2 Oil Level Assemblies

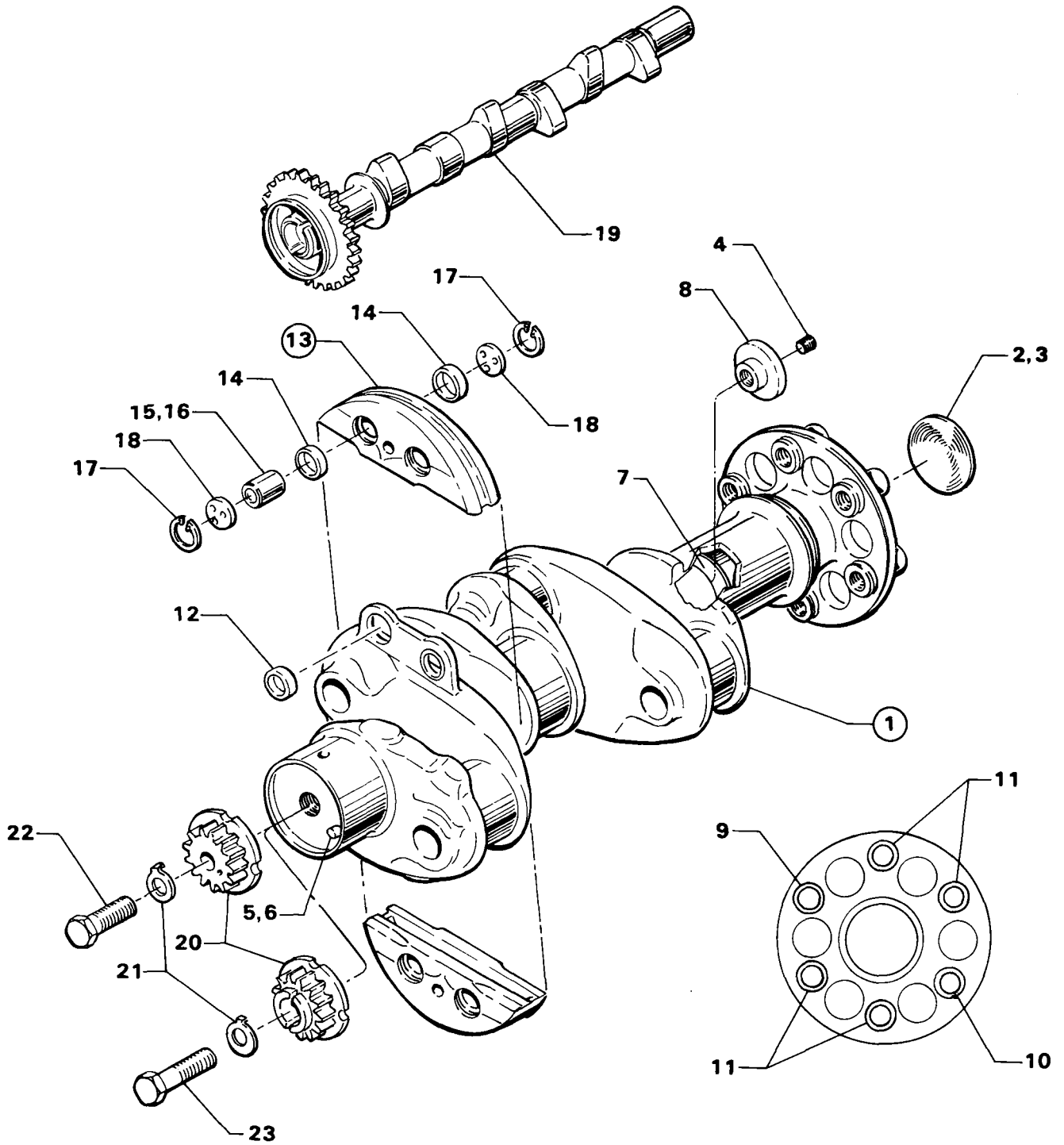


Figure 3 - Crankshaft, Camshaft and Related Parts

CRANKCASE, CRANKSHAFT AND CAMSHAFT GROUP
PROPELLER GOVERNOR DRIVE (CRANKCASE)

FIG. REF.	PART NUMBER	DESCRIPTION	ON ALL	QUANTITY PER ASSEMBLY												
				O-360						LO-360			TO-360			
				B 2	C 1	C 1	C 1	C 2	C 2	D 2	F 1	A 6	A 1	G 6	D 6	C 1
1	77875	GEAR, Prop. governor driven														1
2	LW-14021	SHAFT, Prop. governor idler gear														1
3	77874	GEAR ASSY., Prop. governor idler														1
4	77872	BUSHING, Prop. governor idler gear														2
5	STD-19	DOWEL, 3/32 dia. x 7/32 long														1
6	STD-798	DOWEL, 3/32 dia. x 9/32 long														1
7	73249	WASHER, Thrust														un
	73250	WASHER, Thrust														un
	73251	WASHER, Thrust														un
	73252	WASHER, Thrust														un
8	AN565B1032H5	SET SCREW, No. 10-32 x 5/16 long														1
9	70455	GASKET, 25/32 ID x 1-1/8 OD x 1/16 thick														1
10	LW-13896	PLUG, 3/4-16 hex. hd.														1

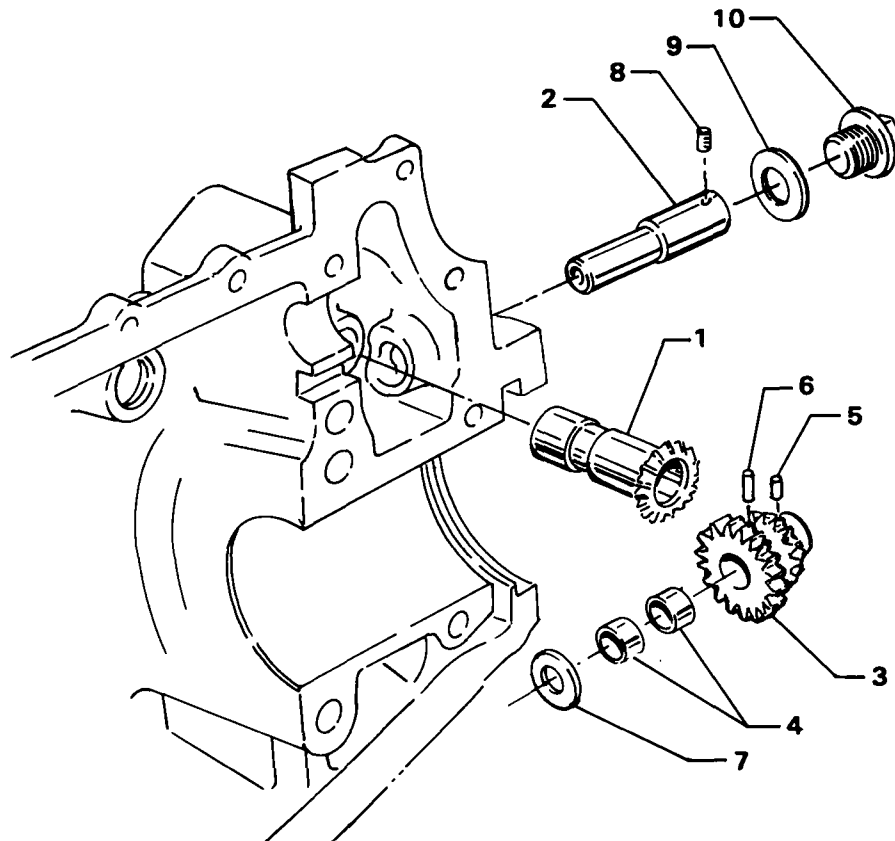


Figure 5.

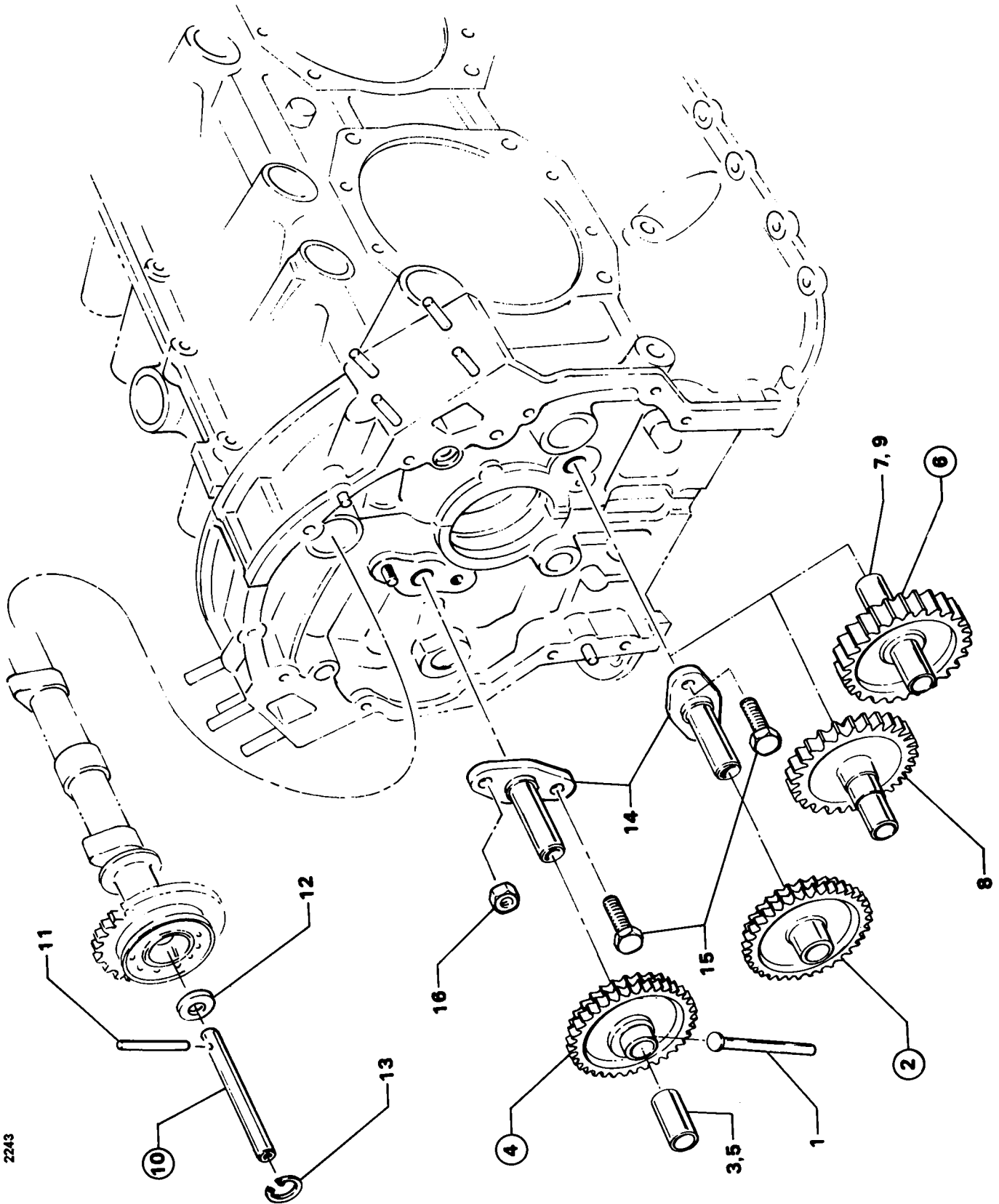
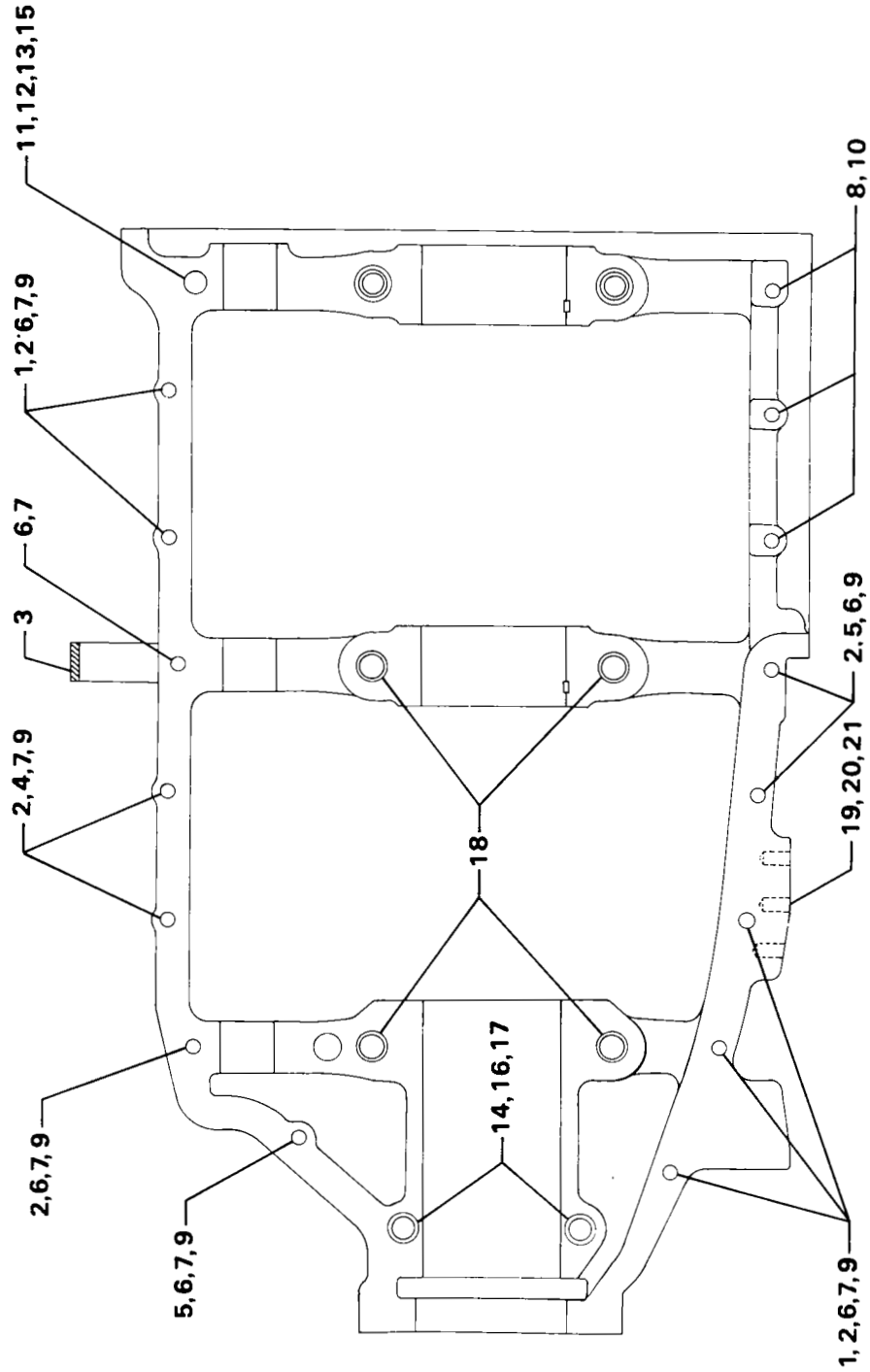


Figure 6 - Crankshaft Idler Gears and Tachometer Drive

CRANKCASE, CRANKSHAFT AND CAMSHAFT GROUP
CRANKCASE ATTACHING PARTS

FIG. REF.	PART NUMBER	DESCRIPTION	ON ALL	QUANTITY PER ASSEMBLY																		
				O-360										LO-360				TO-360				
				B 2 A	C 1 A	C 1 C	C 1 E	C 1 F	C 2 A	C 2 C	C 2 E	D 2 A	F 1 A 6					A 1 G 6 D			C 1 A 6 D	
1	STD-1414	BOLT, 1/4-20 x 1-1/2 long, hex. hd.			8	8	8	8	8	8	8	8	8	8	8				8			7
2	STD-8	WASHER, 1/4 plain			19	19	19	19	19	19	19	19	19	20				19			20	
3	60803	STRAP, Lifting			1	1	1	1	1	1	1	1	1	1				1			2	
4	STD-2084	BOLT, 1/4-20 x 1-3/4 long, hex. hd.			1	1	1	1	1	1	1	1	1	1				1			2	
5	STD-1419	BOLT, 1/4-20 x 1-1/8 long, hex. hd.			3	3	3	3	3	3	3	3	3	4				3			4	
6	STD-160	WASHER, 1/4 lock, internal teeth			12	12	12	12	12	12	12	12	12	13				12			12	
7	STD-1411	NUT, 1/4-20 plain	9																			
8	STD-1416	BOLT, 1/4-20 x 1-1/2 long, hex. hd. dr. end	3																			
9	STD-8	WASHER, 1/4 plain (Max. 9)	un																			
10	STD-1409	NUT, 1/4-20 slotted shear	3																			
11	STD-33	WASHER, 3/8 plain	3																			
12	AN960-616L	WASHER, 3/8 plain (thick), (Max. 3)	un																			
13	STD-872	NUT, 3/8-24 slotted	1																			
14	AN6-34A	BOLT, 3/8-24 x 3-37/64 long, hex. hd.			2	2	2	2	2	2	2	2	2	2	1			2			2	
15	STD-33	WASHER, 3/8 plain	2																			
16	STD-678	WASHER, 3/8 lock, internal teeth	2																			
17	STD-596	NUT, 3/8-24 plain	2																			
18	76220	STUD, 1/2-20 x 10-11/16 long	4																			
19	STD-35*	WASHER, 5/16 plain																			5	
20	STD-475*	WASHER, 5/16 lock, internal teeth																			1	
21	STD-1838*	BOLT, 5/16-18 x 15/16 long, hex. hd.																			1	

* Install in center hole at rear alternator attaching pad.



2279

Figure 7 - Crankcase Attaching Parts

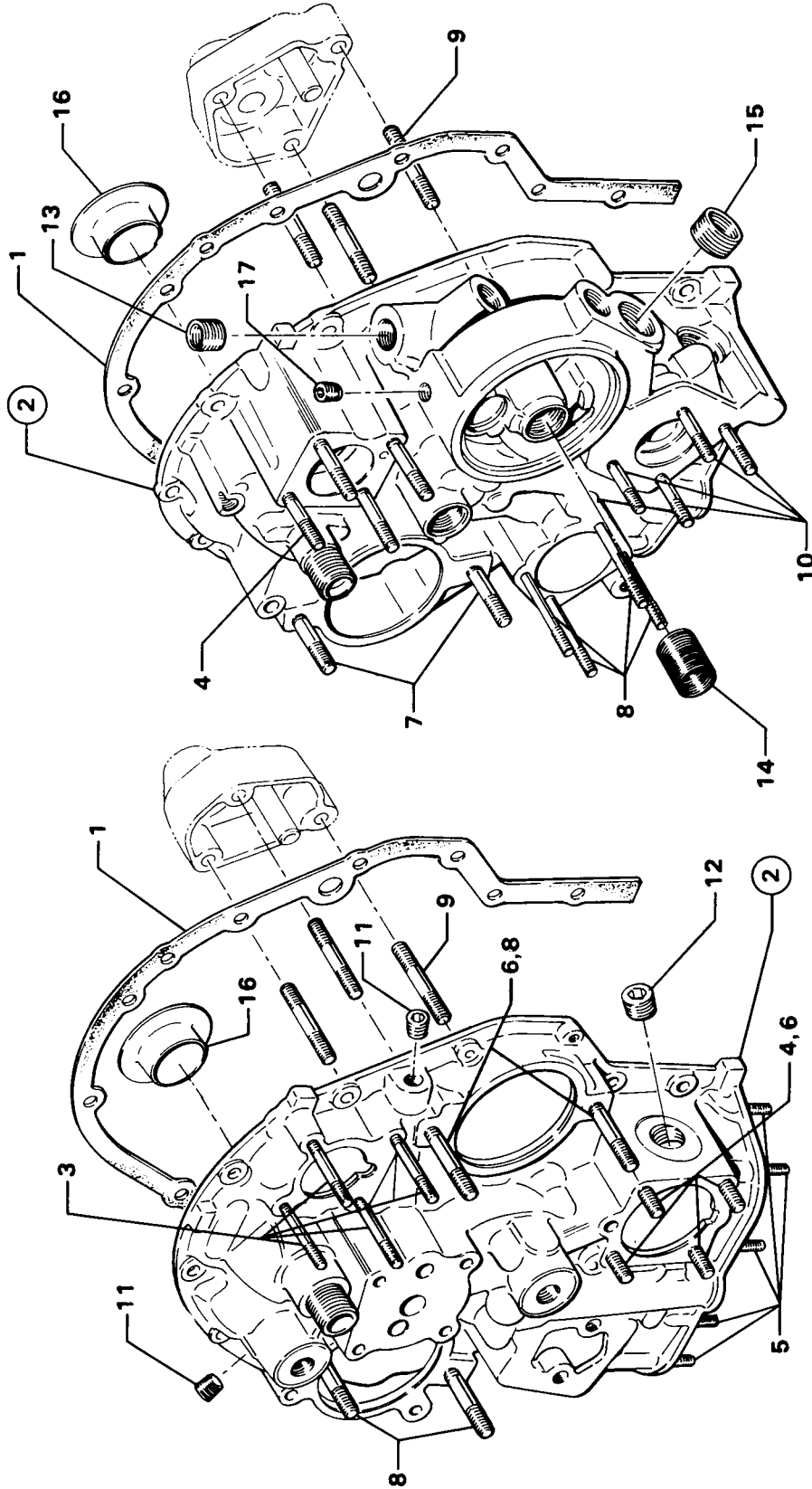


Figure 9 - Accessory Housing Assembly

ACCESSORY HOUSING AND RELATED PARTS
PROPELLER GOVERNOR OIL LINE

FIG. REF.	PART NUMBER	DESCRIPTION	ON ALL	QUANTITY PER ASSEMBLY															
				O-360						LO-360			TO-360						
				B 2 A	C 1 A	C 1 C	C 1 E	C 1 F	C 2 A	C 2 C	C 2 E	D 2 A	F 1 A 6	A 1 G 6 D	C 1 A 6 D				
1	75167	TUBE ASSY., Prop. gov. oil line			1	1	1	1											
	LW-12920	TUBE ASSY., Prop. gov. oil line																	1
2	STD-1930	HOSE, 3/8 ID x 1.00 long			1	1	1	1											1
3	75165	CLIP, Prop. gov. oil line support			1	1	1	1											1
4	STD-35	WASHER, 5/16 plain					3	3											3
5	STD-475	WASHER, 5/16 lock, internal teeth					1	1											1
6	STD-1838	BOLT, 5/16-18 x 15/16 long, hex. hd.					1	1											1
7	LW-16266-25-38	CLAMP			1	1	1	1											1
8	STD-700*	ELBOW, 3/8 flared tube & 1/4 NPT, 90°				1	1	1	1										1
9	74070**	ELBOW, 3/8 flared tube & 9/16-18 str. thd., adj. 45°				1	1	1	1										1

* Assemble in right crankcase, front.

** Assemble in prop. gov. adapter except for LO-360-A1G6D assemble in accessory housing.

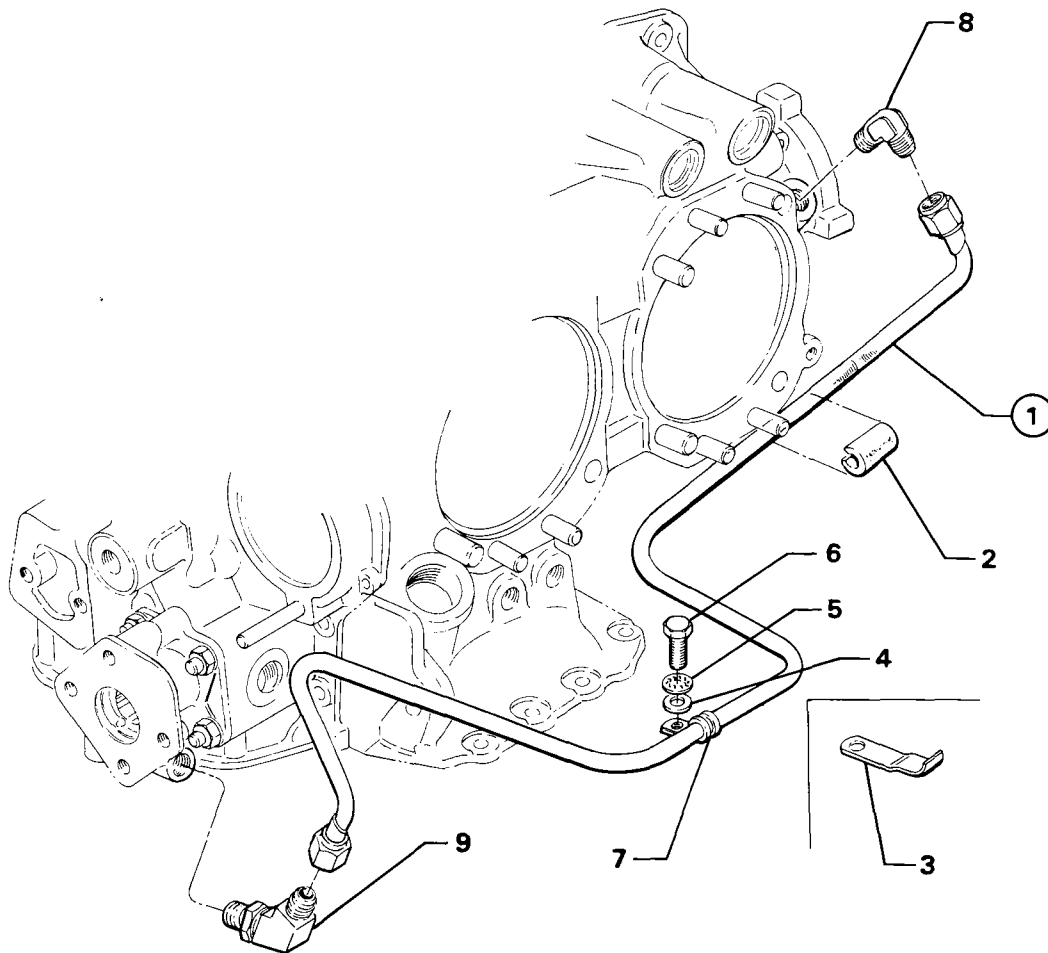
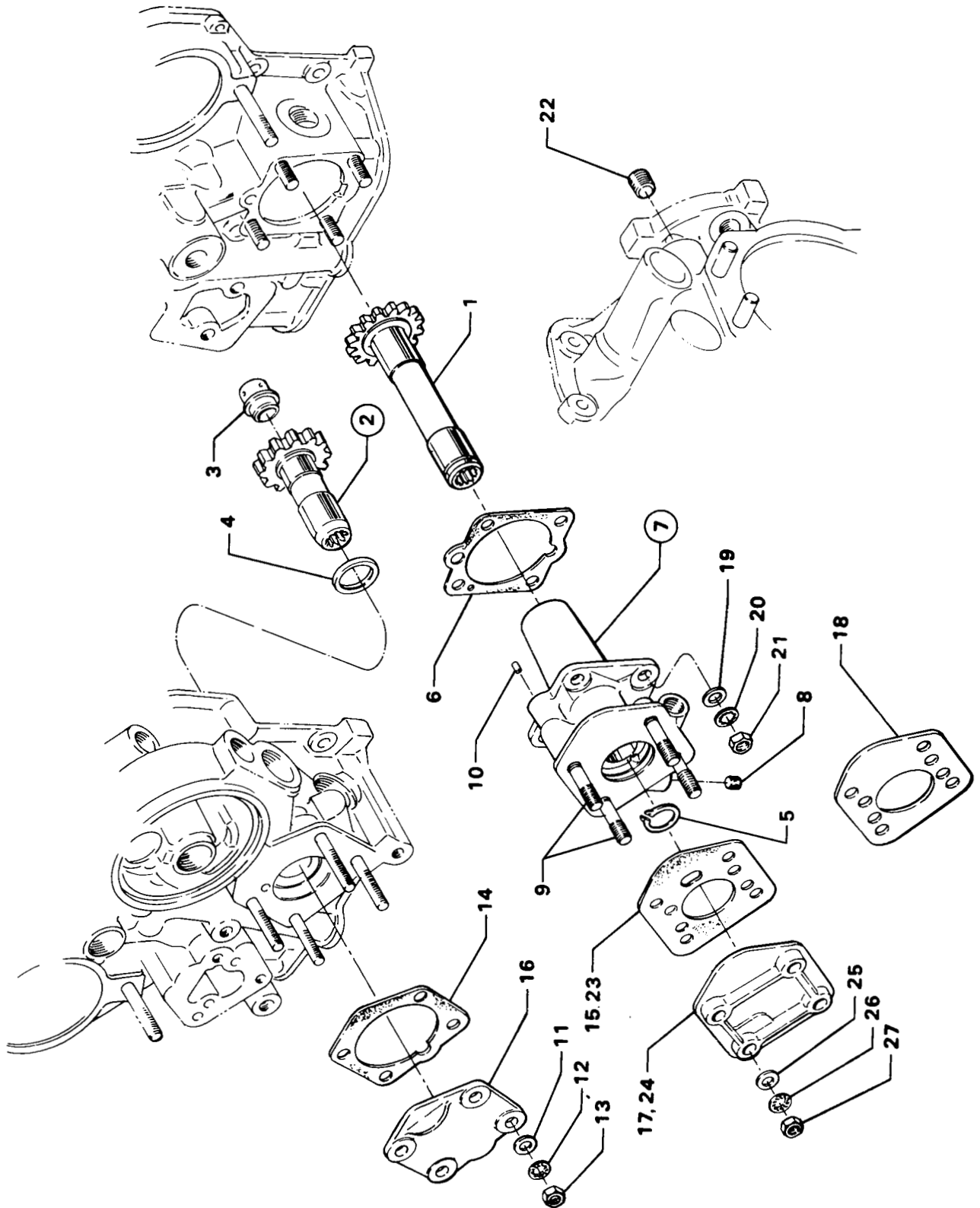
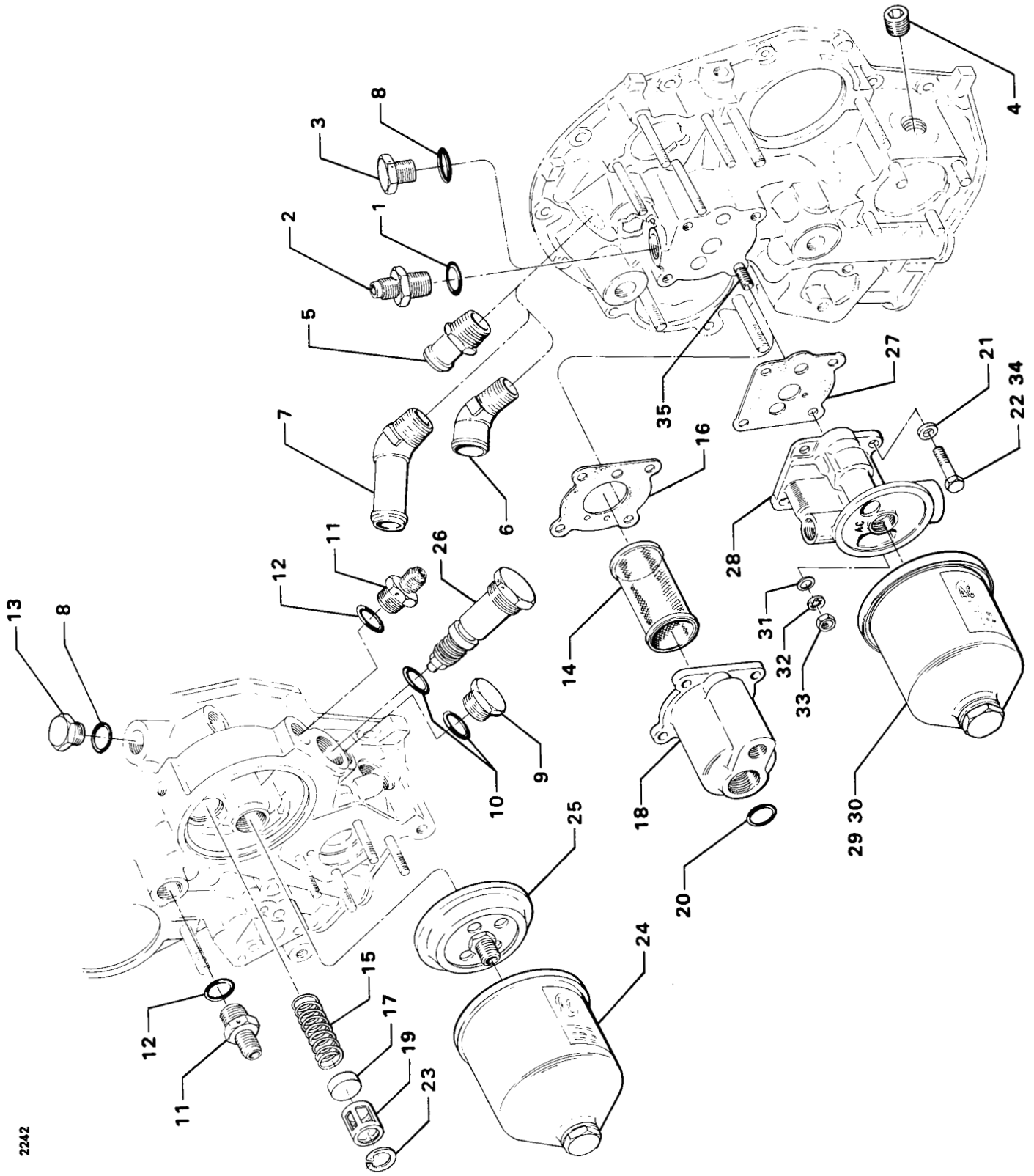


Figure 11.



2241

Figure 12 - Propeller Governor Drive and Covers



2242

Figure 15 - Oil Pressure Screen Filter and Oil Cooler Bypass Valve

CYLINDER, PISTON AND VALVE TRAIN
CYLINDER RELATED PARTS

FIG. REF.	PART NUMBER	DESCRIPTION	ON ALL	QUANTITY PER ASSEMBLY																
				O-360										LO-360			TO-360			
				B 2 A	C 1 A	C 1 C	C 1 E	C 1 F	C 2 A	C 2 C	C 2 E	D 2 A	F 1 A 6				A 1 G 6 D		C 1 A 6 D	
1	73434	ROD ASSY., Push - A total		un	un	un	un	un	un	un	un	un	un	un	un			un		
	73435	ROD ASSY., Push - of 8		un	un	un	un	un	un	un	un	un	un	un	un			un		
	73436	ROD ASSY., Push - push rods		un	un	un	un	un	un	un	un	un	un	un	un			un		
	73437	ROD ASSY., Push - required		un	un	un	un	un	un	un	un	un	un	un	un			un		
	73462	ROD ASSY., Push - A total																	un	
	73463	ROD ASSY., Push - of 8 push																	un	
	73464	ROD ASSY., Push - rods required																	un	
2	69444	ROCKER ASSY., Valve, intake			4	4	4	4	4	4	4	4	4	4	4		4			
3	72117	ROCKER ASSY., Valve								8										
4	60398	BUSHING, Valve rocker		4	4	4	4	4	4	4	4	4	4	4		4				
	60398	BUSHING, Valve rocker								8										
5	76266	ROCKER ASSY., Valve																	8	
6	76242	BUSHING, Valve rocker																	8	
7	74636	ROCKER ASSY., Valve, exhaust		4	4	4	4	4	4	4	4	4	4	4		4				
8	74637	BUSHING, Valve rocker, exhaust		4	4	4	4	4	4	4	4	4	4	4		4				
9	71549	WASHER, Valve rocker thrust																	8	
10	LW-13790	SHAFT, Valve rocker		4	4	4	4	4	4	4	4	4	4	4		4			8	
	72626	SHAFT, Valve rocker																	8	
11	LW-12892	THRUST BUTTON, Rocker shaft		8	8	8	8	8	8	8	8	8	8	8		8				
	LW-11665	THRUST BUTTON, Rocker shaft																	16	
12	66732	GASKET, Valve rocker shaft cover																	8	
13	72710	COVER, Valve rocker shaft																	8	
14	72709	SCREW, 1/4-20 x 5/8 long, self-sealing																	8	
15	75906	GASKET, Rocker box cover		4	4	4	4	4	4	4	4	4	4	4		4				
	76036	GASKET, Rocker box cover																	4	
16	61247	COVER, Rocker box		4	4	4	4	4	4	4	4	4	4	4		4				
17	72310	COVER ASSY., Rocker box (left)								2										
18	72380	COVER ASSY., Rocker box (right)								2										
19	LW-14433	COVER ASSY., Rocker box																	4	
20	STD-1925	SCREW, 1/4-20 x 5/8 long, pan. hd., self-locking		24	24	24	24	24	24	24	24	24	24	24		24				
21	STD-2059	SCREW, 1/4-20 x 11/16 long, pan. hd., self-locking																	32	
22	71481	RING, Oil seal, 3/32 dia. x 4-27/32 ID	4																	
23	74887	SPACER, 33/64 ID x 7/8 OD x 3/8 thick	2																	
24	383-B	NUT, 3/8-24 plain	16																	
25	STD-2090	NUT, 1/2-20 plain	18																	
26	74494	PLATE, Spark plug reach caution																	4	
27	65321	GASKET, Exhaust flange		4	4	4	4	4	4	4	4	4	4	4						
	77611	GASKET, Exhaust flange															4			
28	61260	FLANGE, Exhaust, stainless		4	4	4	4		4	4	4	4								
29	STD-35	WASHER, 5/16 plain		8	8	8	8	8	8	8	8	8	8	8		8				
30	STD-475	WASHER, 5/16 lock, internal teeth		8	8	8	8	8	8	8	8	8	8	8		8				
31	STD-1410	NUT, 5/16-18 plain		8	8	8	8	8	8	8	8	8	8	8		8				

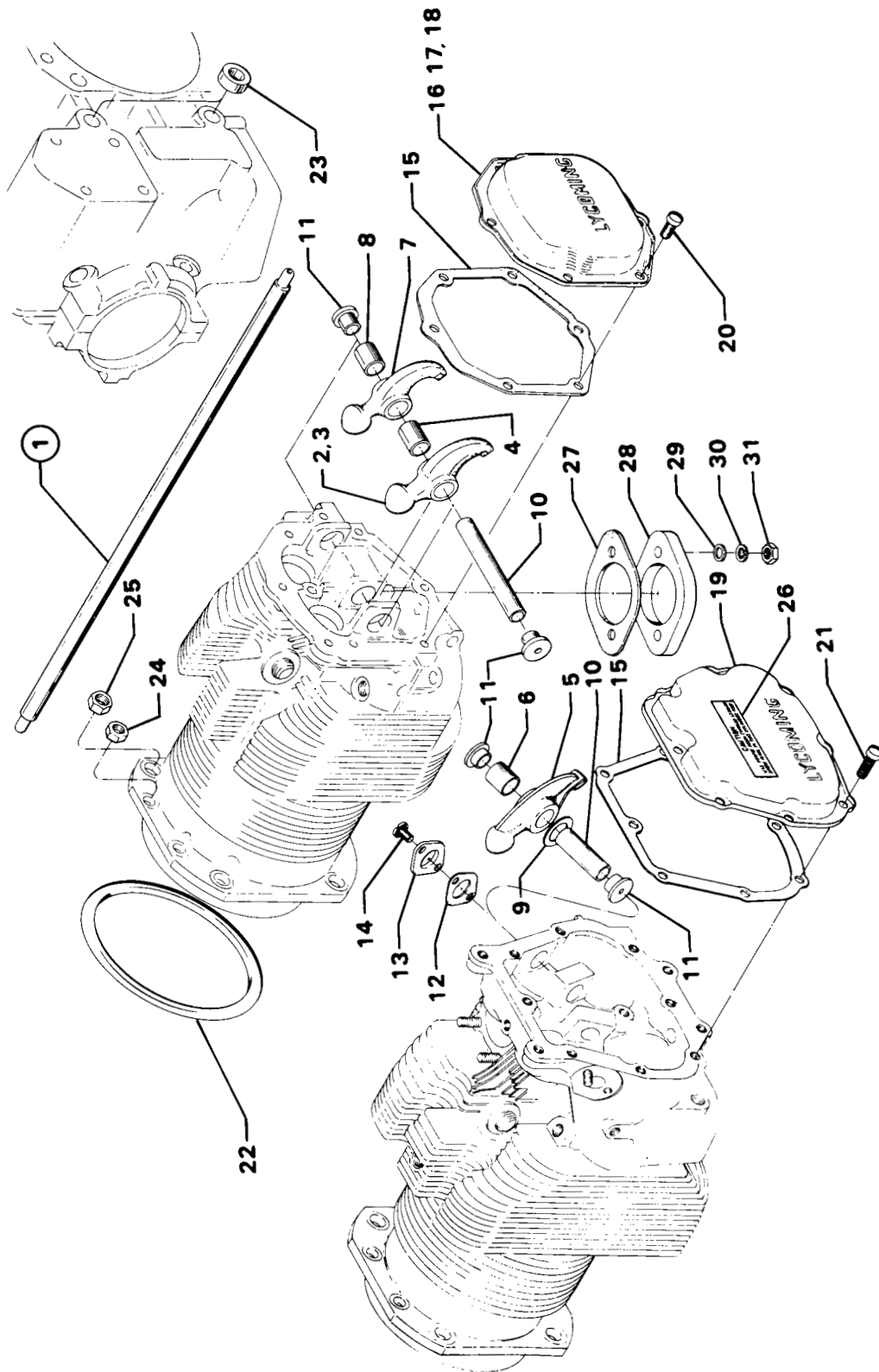
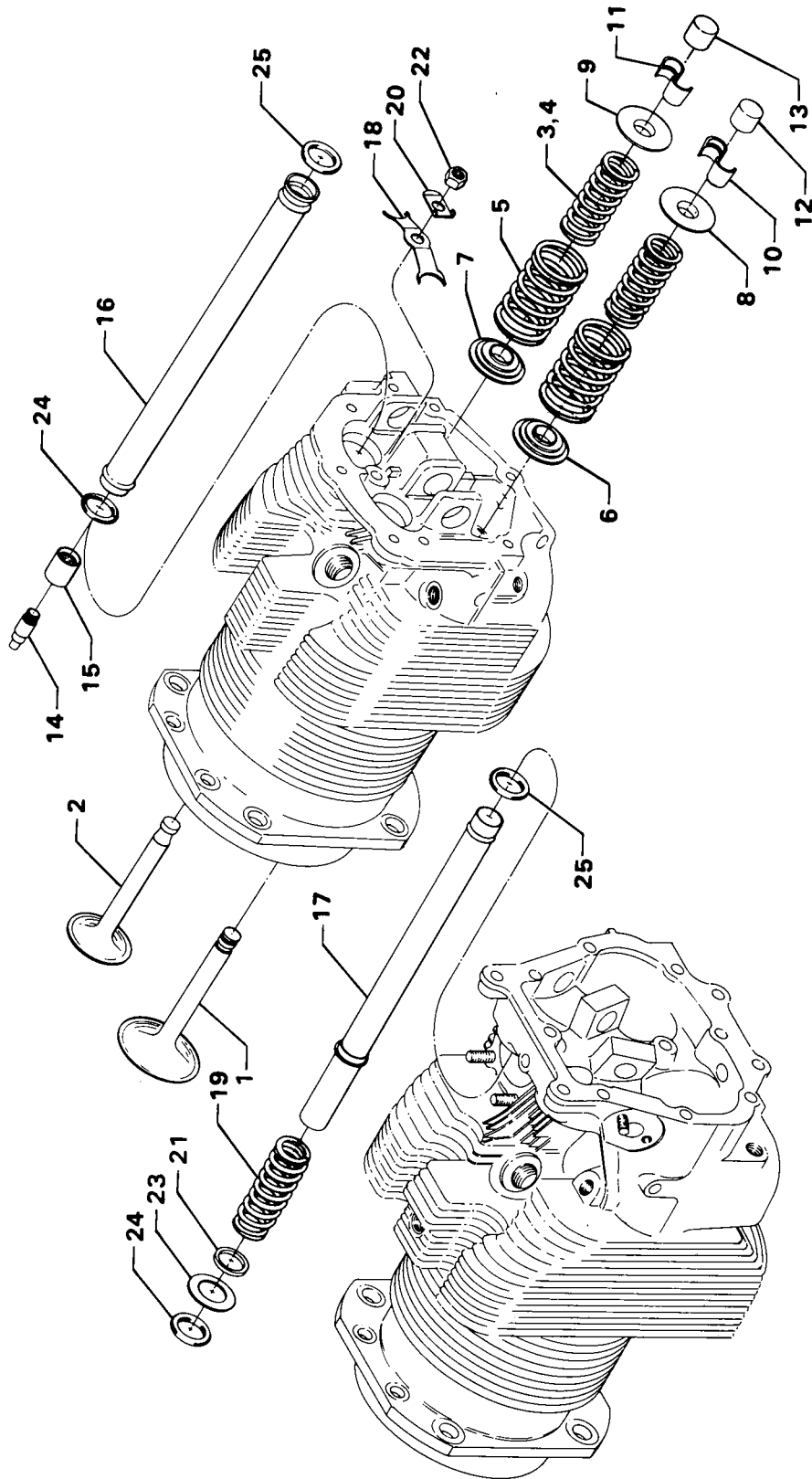


Figure 18 - Cylinder Related Parts

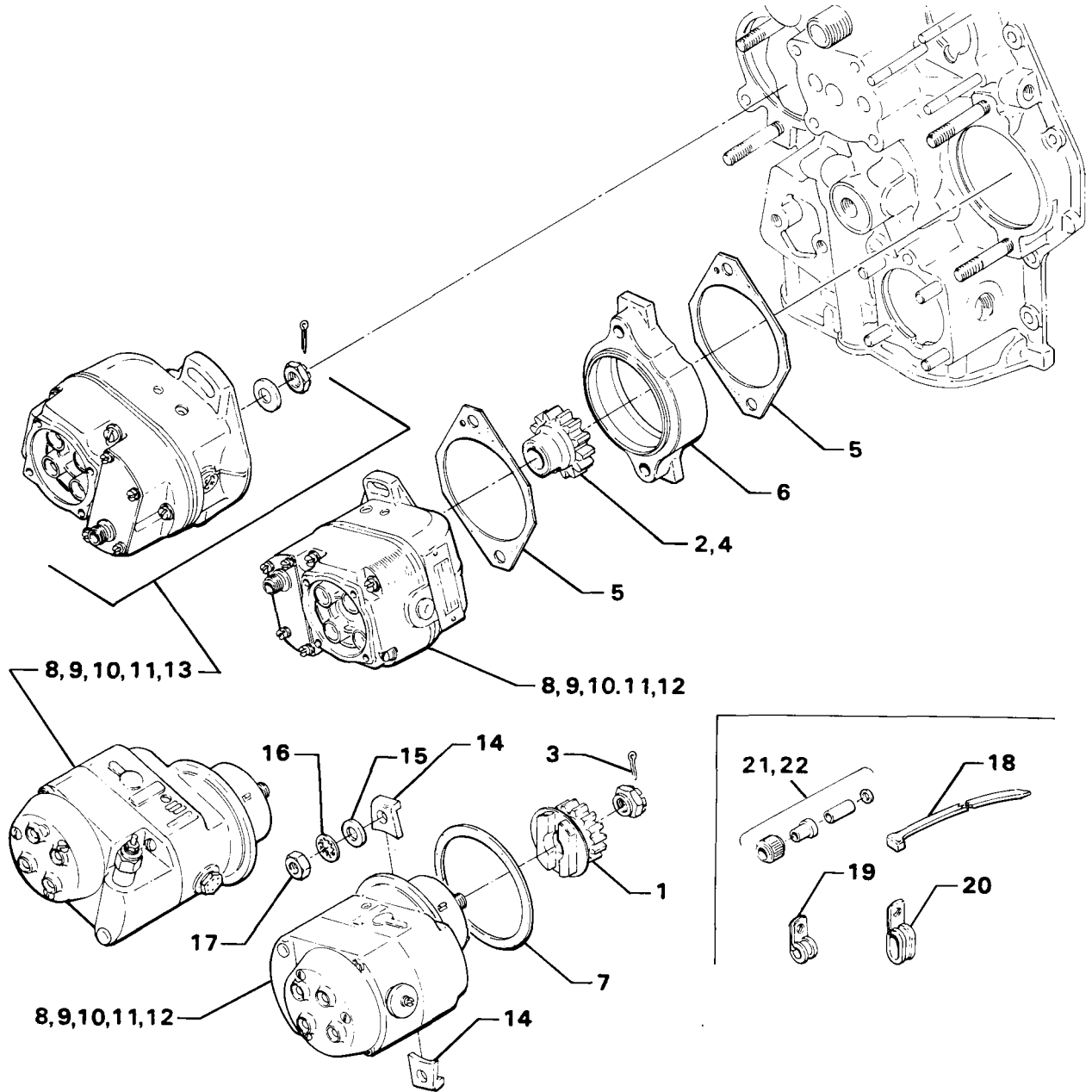
CYLINDER, PISTON AND VALVE TRAIN
VALVE ASSEMBLY

FIG. REF 19	PART NUMBER	DESCRIPTION	ON ALL	QUANTITY PER ASSEMBLY															
				O-360										LO-360			TO-360		
				B 2 A	C 1 A	C 1 C	C 1 E	C 1 F	C 2 A	C 2 C	C 2 E	D 2 A	F 1 A 6				A 1 G 6 D		
1	73938	VALVE, Intake		4	4	4	4	4	4	4	4	4	4	4	4		4		
	LW-13262	VALVE, Intake (hollow stem) rotator type																	4
2	74541	VALVE, Exhaust (rotator type)		4	4	4	4	4	4	4	4	4	4	4		4			
	LW-15732	VALVE, Exhaust (rotator type)																4	
3	LW-11795	SPRING, Valve, inner		8	8	8	8	8	8	8	8	8	8	8		8			
4	LW-11797	SPRING, Valve, auxiliary																8	
5	LW-11800	SPRING, Valve, outer		8	8	8	8	8	8	8	8	8	8	8		8			
	LW-11796	SPRING, Valve, outer																8	
6	65441	SEAT, Valve spring, lower, intake		4	4	4	4	4	4	4	4	4	4	4		4			
	LW-14893	SEAT, Valve spring, lower, intake																4	
7	LW-13323	SEAT, Valve spring, lower, exhaust		4	4	4	4	4	4	4	4	4	4	4		4			
	LW-14894	SEAT, Valve spring, lower, exhaust																4	
8	LW-10077	SEAT, Valve spring, upper, intake		4	4	4	4	4	4	4	4	4	4	4		4			
	69532	SEAT, Valve spring, upper, intake																4	
9	LW-16475	SEAT, Valve spring, upper, exhaust (rotator type)	4																
10	60009	KEY, Valve, intake		8	8	8	8	8	8	8	8	8	8	8		8			
	72050	KEY, Valve, intake																8	
11	MS13997-3	KEY, Valve, exhaust (rotator type)	8																
12	62388	CAP, Valve stem																4	
13	MS13998-3	CAP, Valve stem, exhaust (rotator type)	4																
14	78290	PLUNGER ASSY., Hydraulic tappet	8																
15	78524	SOCKET, Push rod, hydraulic tappet	8																
16	LW-11485	TUBE, Push rod shroud		8	8	8	8	8	8	8	8	8	8	8		8			
17	LW-14018	TUBE ASSY., Push rod shroud																8	
18	LW-14995	SPRING, Shroud tube		4	4	4	4	4	4	4	4	4	4	4		4			
19	LW-13565	SPRING, Shroud tube																8	
20	LW-12272	LOCKPLATE, Shroud tube		4	4	4	4	4	4	4	4	4	4	4		4			
21	LW-13618	SPACER, Shroud tube																8	
22	STD-1411	NUT, 1/4-20 plain		4	4	4	4	4	4	4	4	4	4	4		4			
23	LW-13619	WASHER, 25/32 ID x 1-1/4 OD x .040 - .046 thick																8	
24	62922	SEAL, Shroud tube		8	8	8	8	8	8	8	8	8	8	8		8			
25	70310	SEAL, Shroud tube		8	8	8	8	8	8	8	8	8	8	8		8		16	



2426

Figure 19.



2284

Figure 21 - Magneto Drives and Magnetos

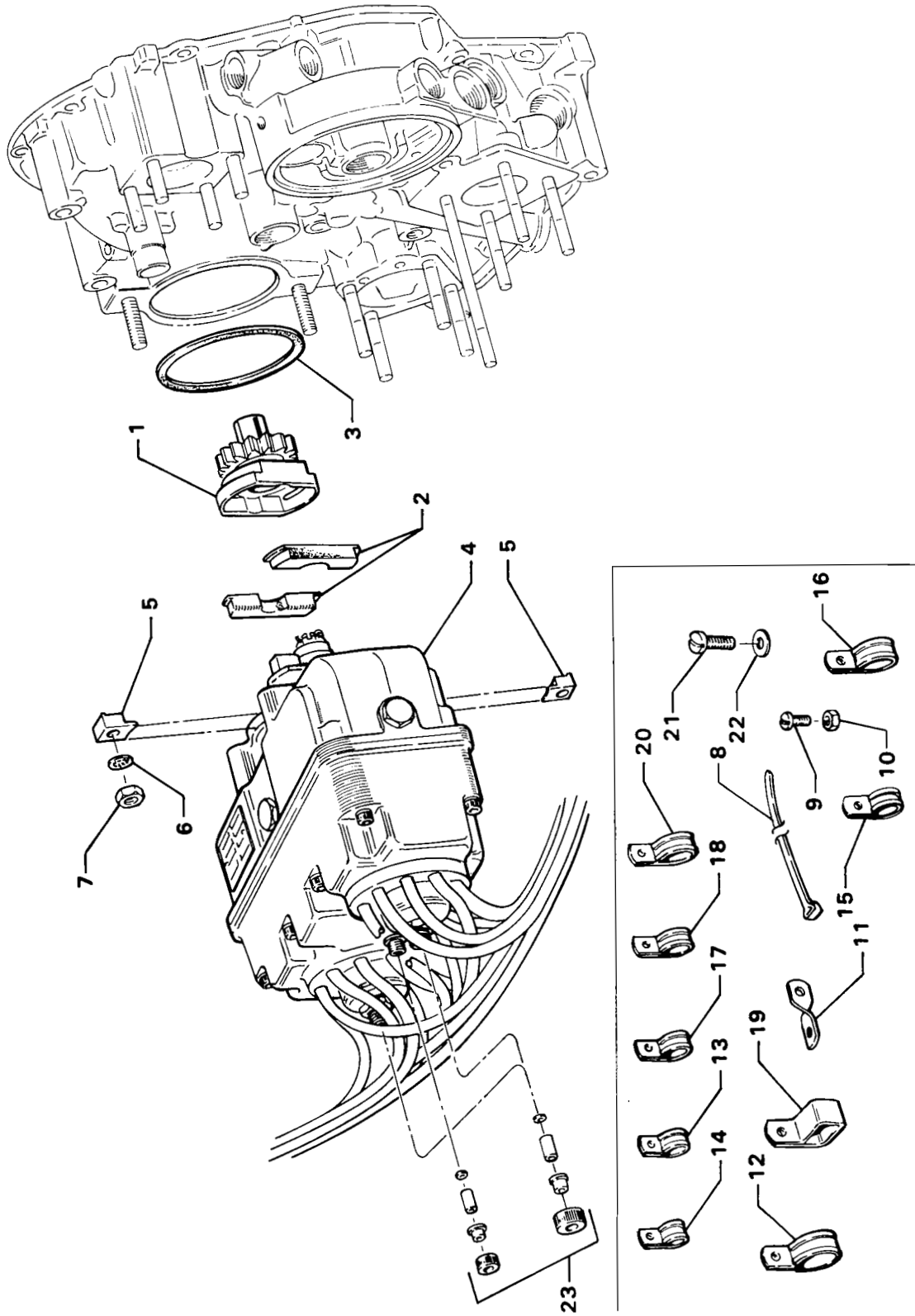


Figure 22 - Magnetos Drives and Magnetos (Dual Magnetos)

IGNITION SYSTEM
IGNITION HARNESS AND LEAD ASSEMBLY (TEXTRON LYCOMING)

FIG. REF.	PART NUMBER	DESCRIPTION	ON ALL	QUANTITY PER ASSEMBLY															
				O-360						LO-360				TO-360					
				B 2 A	C 1 A	C 1 C	C 1 E	C 1 F	C 2 A	C 2 C	C 2 E	D 2 A	F 1 A 6				A 1 G 6 D		
1	78539	CABLE ASSY., Ignition, shielded harness			1	1	1			1	1	1							
2	LW-10811	TERMINAL, Spark plug wire			8	8	8			8	8	8							
3	LW-10814	SPRING, Spark plug terminal			8	8	8			8	8	8							
4	LW-10812	COLLAR, (Silicone) spark plug terminal								8	8	8							
5	76757	NUT, 5/8-24			8	8	8			8	8	8							
6	LW-10389	ELBOW, 70°			8	8	8			8	8	8							
7	76753	SLEEVE, Ring plastic			4	4	4			4	4	4							
8	76754	PLATE, Spark plug cable			2	2	2			2	2	2							
9	LW-10400	FERRULE, Braid, retaining			16	16	16			16	16	16							
10	76728	SLEEVE			8	8	8			8	8	8							
11	76852	GROMMET, Magneto			2	2	2			2	2	2							
12	73245	EYELET			8	8	8			8	8	8							
13	75941	IDENTIFICATION, Tape, ignition			1	1	1			1	1	1							
14	76853	MAGNETO PLATE			2	2	2			2	2	2							
15	72453	CLAMP, 1-3/4 ID with 11/32 dia. offset			4	4	4			4	4	4							
16	STD-553	SCREW, No. 6-32 x 1/2 long, rd. hd.			4	4	4			4	4	4							
17	AN365-632A	NUT, No. 6-32 self-locking			4	4	4			4	4	4							
18	72351	SCREW, No. 10-32 self-locking			8	8	8			8	8	8							
19	61385	CLIP, Ignition on cable			2	2	2			2	2	2							
20	STD-8	WASHER, 1/4 plain			2	2	2			2	2	2							
21	STD-160	WASHER, 1/4 lock, internal teeth			2	2	2			2	2	2							
22	AN500-416-18	SCREW, 1/4-20 x 1-1/8 long, fill. hd.			1	1	1			1	1	1							
23	STD-1215	SCREW, 1/4-20 x 1-1/4 long, fill. hd.			1	1	1			1	1	1							
24	STD-1411	NUT, 1/4-20 plain			2	2	2			2	2	2							
25	STD-696	WASHER, 1/4 plain (thin)			un	un	un			un	un	un							
*	76923-48S70-63	LEAD ASSY., Replacement, top and bottom leads (78539 harness)			un	un	un			un	un	un							

* Replacement lead assemblies have spark plug terminal end assembled and are shipped with necessary parts to complete magneto end assembly after being cut to proper length.

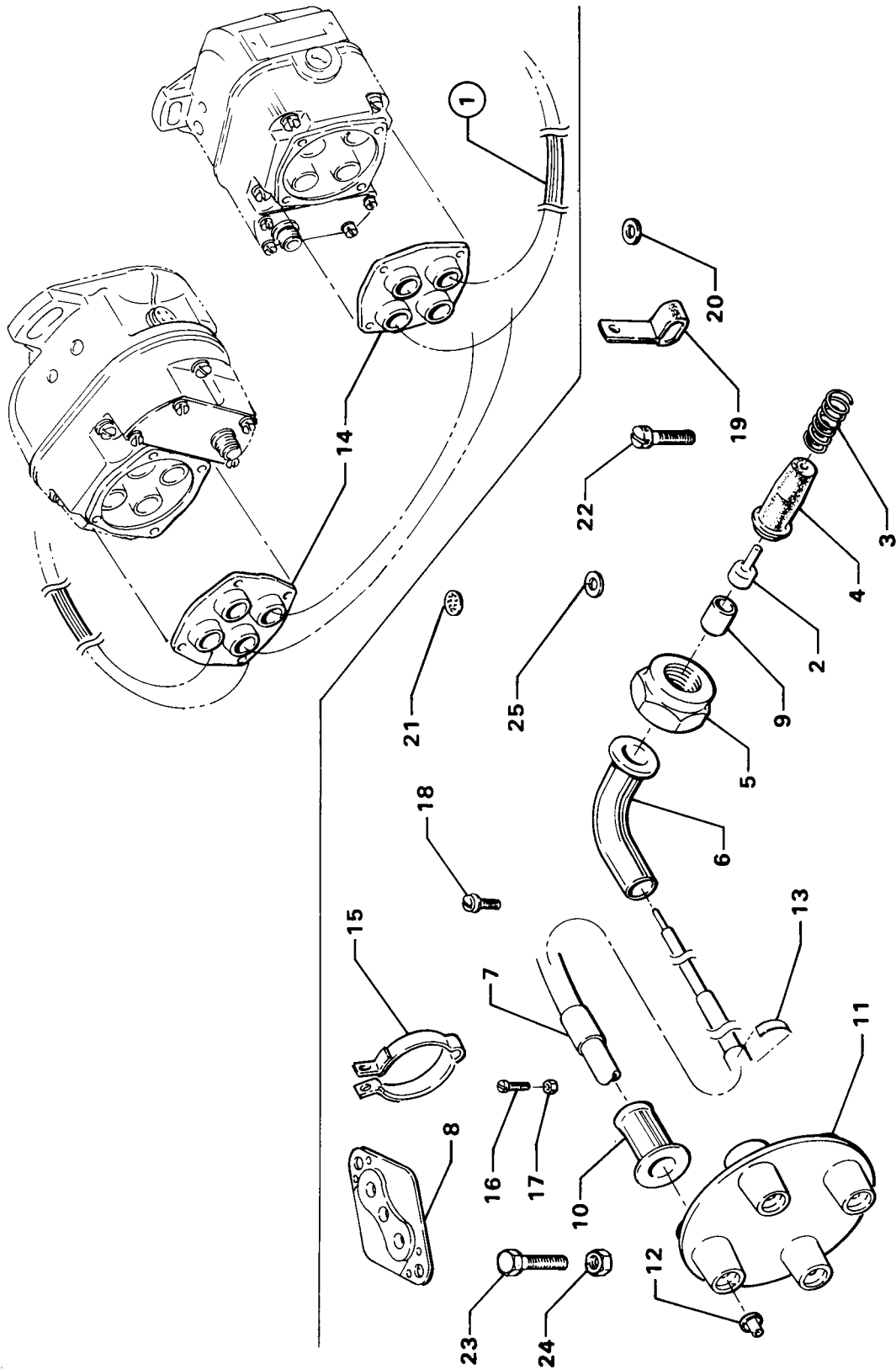


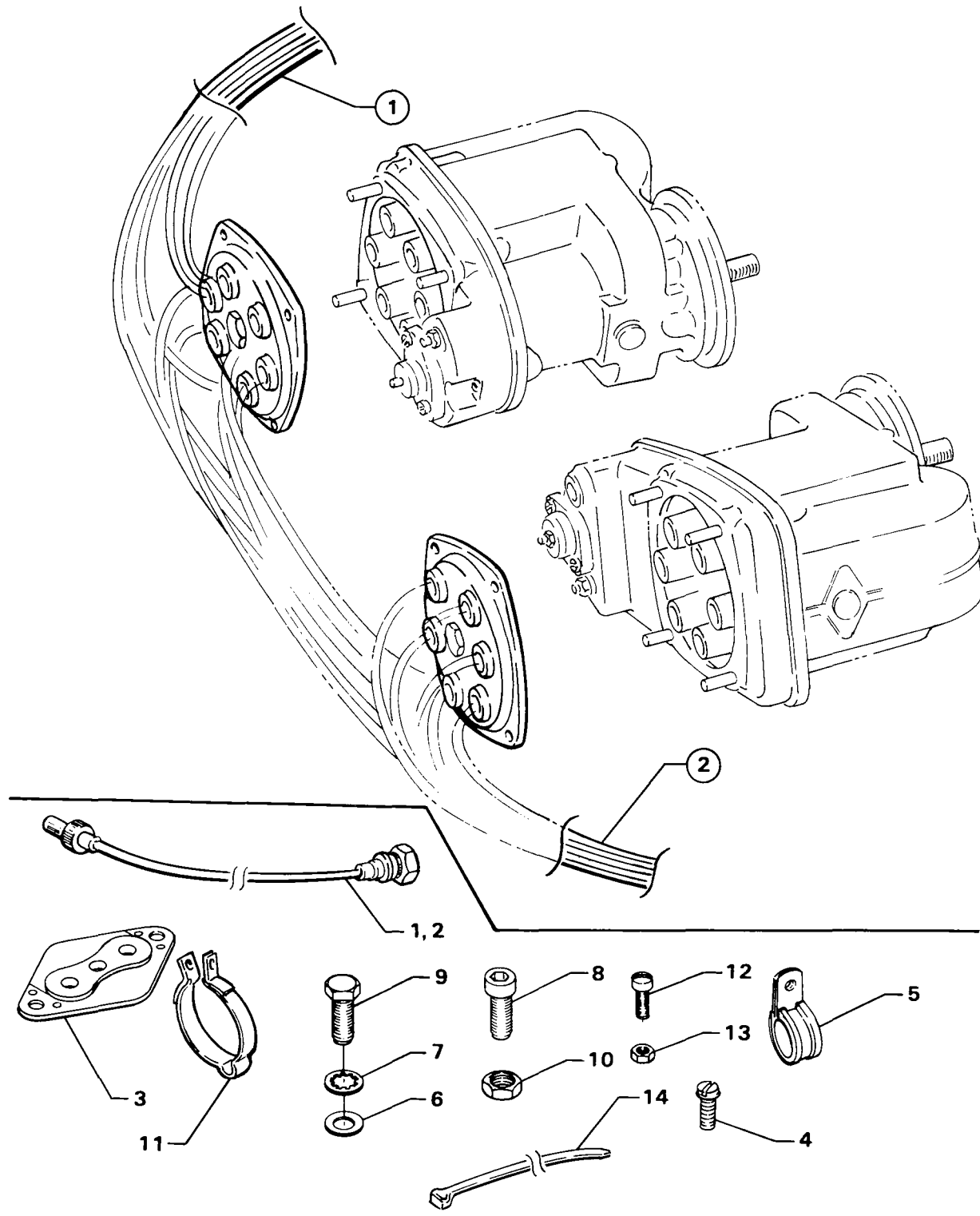
Figure 23 - Ignition Harness and Lead Assembly (Textron Lycoming)

2304

IGNITION SYSTEM
IGNITION HARNESS AND LEAD ASSEMBLY (SLICK)

FIG. REF.	PART NUMBER	DESCRIPTION	ON ALL	QUANTITY PER ASSEMBLY																
				O-360						LO-360						TO-360				
				B 2 A	C 1 A	C 1 C	C 1 E	C 1 F	C 2 A	C 2 C	C 2 E	D 2 A	F 1 A 6					A 1 G 6 D		
1	LW-M-2403	HARNESS ASSY., Left magneto				1				1										
2	LW-M-2404	HARNESS ASSY., Right magneto				1				1										
3	LW-M-2375	PLATE, Spark plug cable				2				2										
4	72351	SCREW, No. 10-32 self-locking				8				8										
5	LW-14060	CLIP, Two wire for 1/4 screw				2				2										
6	STD-8	WASHER, 1/4 plain				2				2										
7	STD-160	WASHER, 1/4 lock, internal teeth				2				2										
8	AN500-416-18	SCREW, 1/4-20 x 1-1/8 long, fill. hd.				1				1										
9	STD-1215	SCREW, 1/4-20 x 1-1/4 long				1				1										
10	STD-1411	NUT, 1/4-20 plain				2				2										
11	71910	CLAMP, 1-3/4 ID				4				4										
12	STD-553	SCREW, No. 6-32 x 1/2 long, rd. hd.				4				4										
13	AN365-632A	NUT, No. 6-32 self-locking				4				4										
14	76734	ZIP STRAP				2				2										
*	M-1985-48	LEAD ASSY., Replacement top and bottom leads (LW-M-2403 and LW-M-2404 harnesses)																		
						un				un										

* Replacement lead assemblies have spark plug terminal ends assembled and are supplied with necessary parts to complete magneto end assembly after being cut to proper length.



2181

Figure 24 - Ignition Harness and Lead Assembly (Slick)

IGNITION SYSTEM
SPARK PLUGS

FIG. REF.	PART NUMBER	DESCRIPTION	ON ALL	QUANTITY PER ASSEMBLY														
				O-360						LO-360			TO-360					
				B2A	C1A	C1C	C1E	C1F	C2A	C2C	C2E	D2A	F1A6	A1G6D	C1A6D			
1	1182-B3	SPARK PLUG, (Champion REM-40E), high compression, shielded				8	8	8	8	8	8							
	1182-B6	SPARK PLUG, (Champion EM-41E), low compression, shielded		8								8						
	1182-D4	SPARK PLUG, (Champion RHM-38E), all weather										8		8				
	1182-U5	SPARK PLUG, (Champion RHB-32E), long reach																8

NOTE

The above spark plugs are those used in current production only; this list does not include additional spark plugs that are approved for use in these engines. See latest edition of Service Instruction No. 1042 for complete listing of all approved spark plugs.

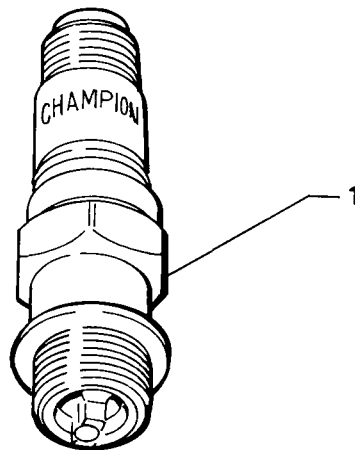
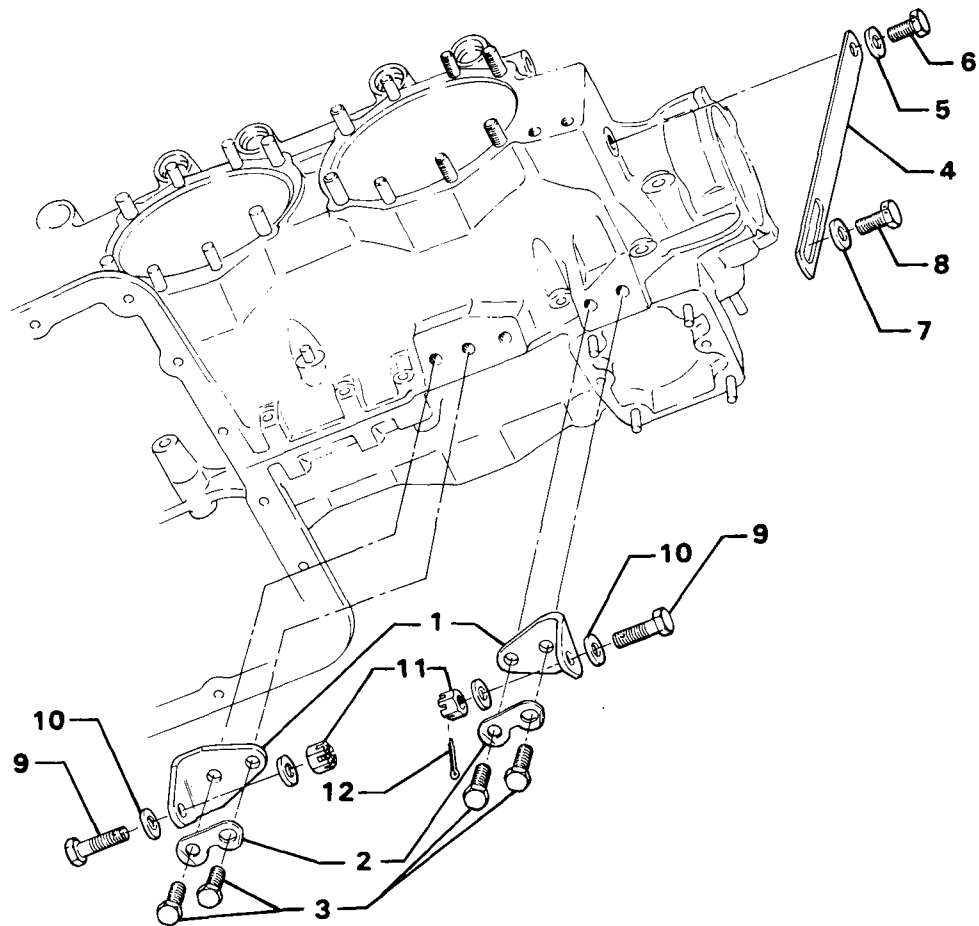


Figure 25.

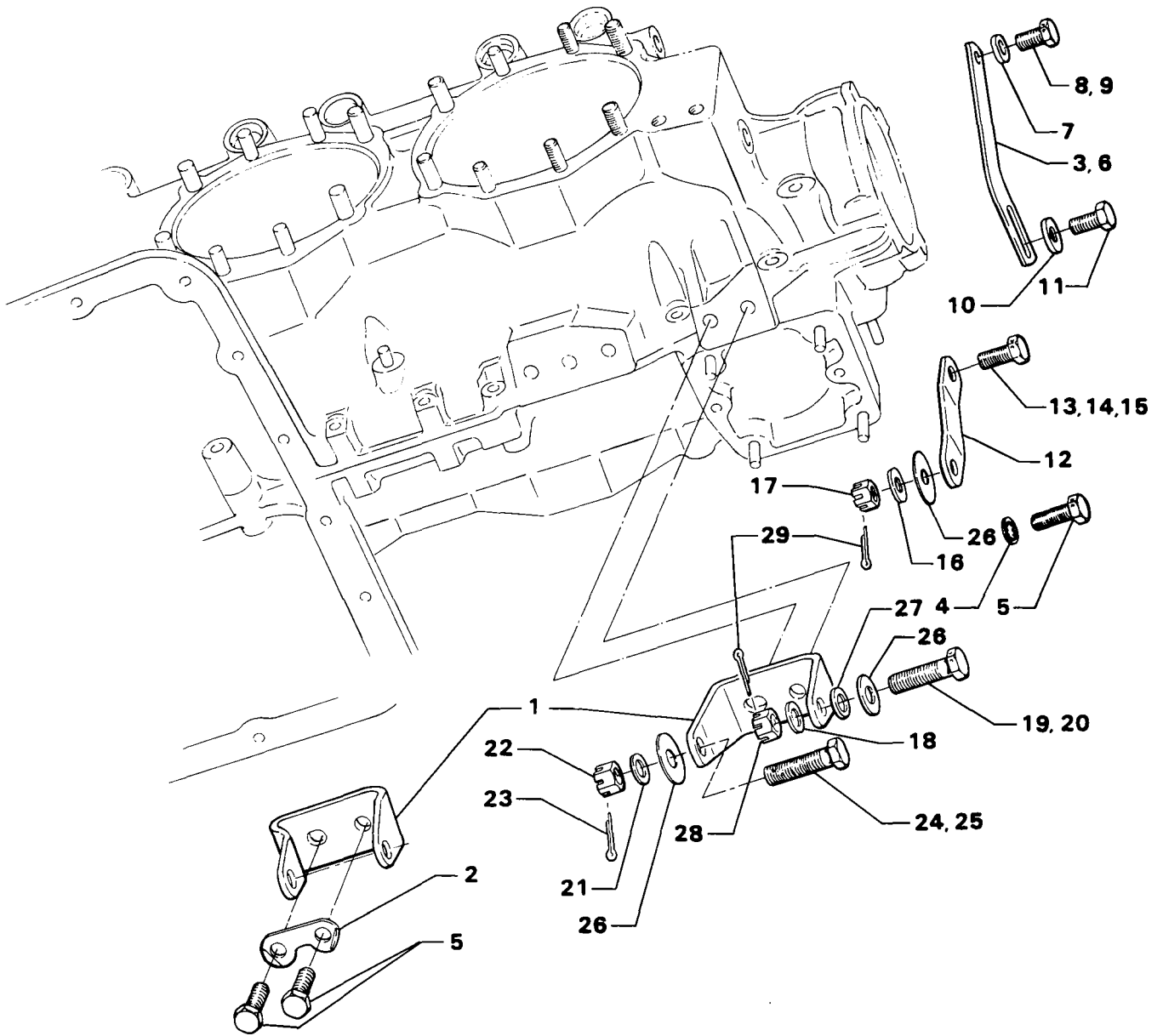
ELECTRICAL COMPONENTS
GENERATOR MOUNTING AND ATTACHING PARTS

FIG. REF.	PART NUMBER	DESCRIPTION	ON ALL	QUANTITY PER ASSEMBLY													
				O-360						LO-360			TO-360				
				B A	C A	C C	C E	C F	C A	C C	D A	F A	A 6	A G 6 D	C A 6 D		
1	70419	BRACKET, Generator		2	2	2			2	2							
2	73383	LOCKPLATE, 5/16 bolt x 1.00 spacing		2	2	2			2	2							
3	STD-1838	BOLT, 5/16-18 x 15/16 long, hex. hd		4	4	4			4	4							
4	76028	LINK, Generator adjusting		1	1	1			1	1							
5	STD-35	WASHER, 5/16 plain		1	1	1			1	1							
6	LW-31H.75	BOLT, 5/16-18 x 3/4 long, hex. hd. dr.		1	1	1			1	1							
7	STD-1727	WASHER, Plain, 3/4 OD x 1 1/32 ID x 1/8 thick		1	1	1			1	1							
8	LW-31H.75	BOLT, 5/16-18 x 3/4 long, hex. hd. dr.		1	1	1			1	1							
9	STD-1851	BOLT, 5/16-18 x 1-5/32 long, dr. end		2	2	2			2	2							
10	STD-35	WASHER, 5/16 plain		un	un	un			un	un							
11	STD-1420	NUT, 5/16-18 slotted		2	2	2			2	2							
12	STD-68	PIN, 1/16 dia. x 1/2 long, cotter		2	2	2			2	2							



2111

Figure 27.



2108

Figure 28 - Alternator Mounting and Attaching Parts

OIL SUMP AND INDUCTION SYSTEM
OIL SUMP ASSEMBLY AND OIL SUCTION SCREEN

FIG. REF.	PART NUMBER	DESCRIPTION	ON ALL	QUANTITY PER ASSEMBLY															
				O-360								LO-360				TO-360			
				B 2	C 1	C 1	C 1	C 1	C 2	C 2	C 2	D 2	F 1	A 6	A 1	G 6	D 6	C 1	A 6
1	LW-13353	GASKET, Oil sump	1																
2	78915	SUMP ASSY., Oil		1	1	1	1		1	1	1	1							
	77159	SUMP ASSY., Oil						1							1				
	LW-15796	SUMP ASSY., Oil																1	
	LW-16154	SUMP ASSY., Oil																	
3	78914	CONNECTION, Intake pipe		4	4	4	4		4	4	4	4							
	69602	CONNECTION, Intake pipe						4						4				4	
4	61400	STUD, 1/4-20 x 3/16 long	4																
5	31C-15	STUD, 5/16-18 x 1-7/8 long		4	4	4	4		4	4	4	4							
6	31C-14	STUD, 5/16-18 x 1-3/4 long						4							4			4	
7	STD-91	PLUG, 1/2-14 NPT, Allen hd.		1	1	1	1		1	1	1	1							
8	1102	PLUG, 1/8-27 NPT, Allen hd.						2						2				2	
9	STD-551	PLUG, 1/2-14 NPT, Sq. hd., drilled	2																
10	STD-8	WASHER, 1/4 plain	28																
11	STD-160	WASHER, 1/4 lock, internal teeth	20																
12	STD-1204	BOLT, 1/4-20 x 15/16 long, hex. hd.		14	14	14	14	8	14	14	14	14	14		8			8	
13	STD-1419	BOLT, 1/4-20 x 1-1/8 long, hex. hd.	2																
14	STD-1411	NUT, 1/4-20 plain		12	12	12	12	18	12	12	12	12	18		18			18	
15	70484	SCREEN, Oil suction	1																
16	STD-111	GASKET, 1.00 ID x 1-1/4 OD x 3/32 annular	1																
17	LW-12545	PLUG, 5/8 hex. hd. x 1.00-20 thd.	1																
18	61548	NAMEPLATE	1																
19	STD-1901	DRIVE STUD, No. 4 x 3/16 long, rd. hd.	4																

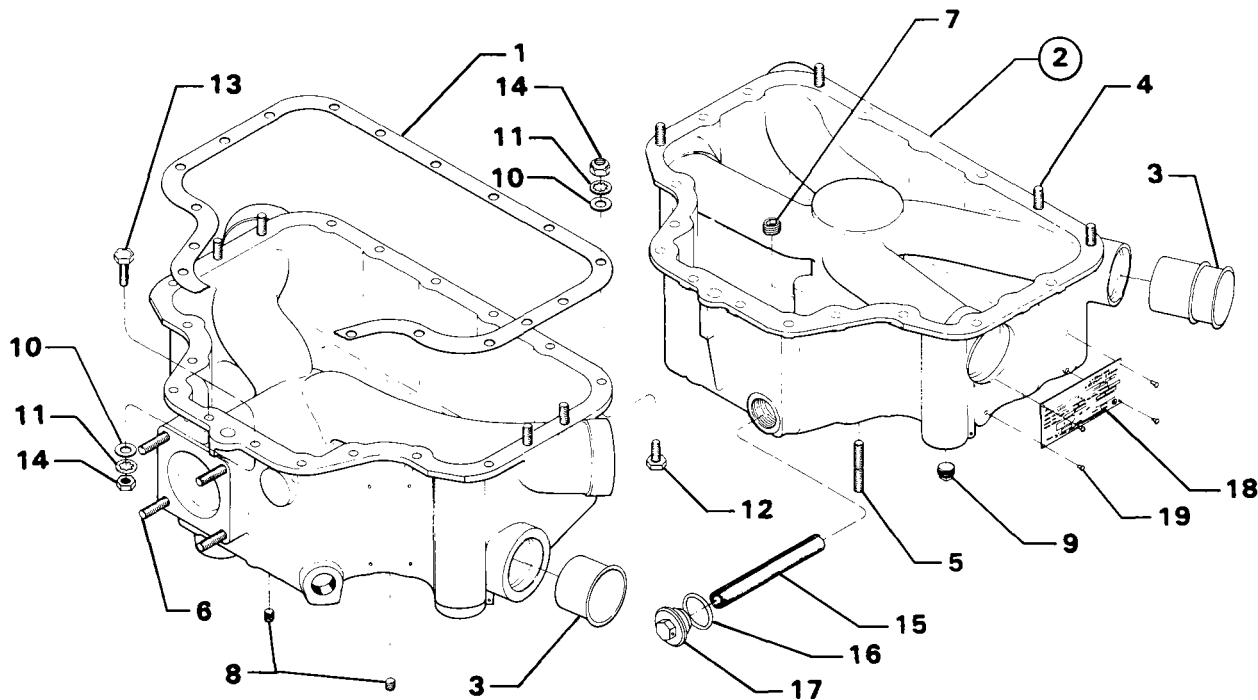
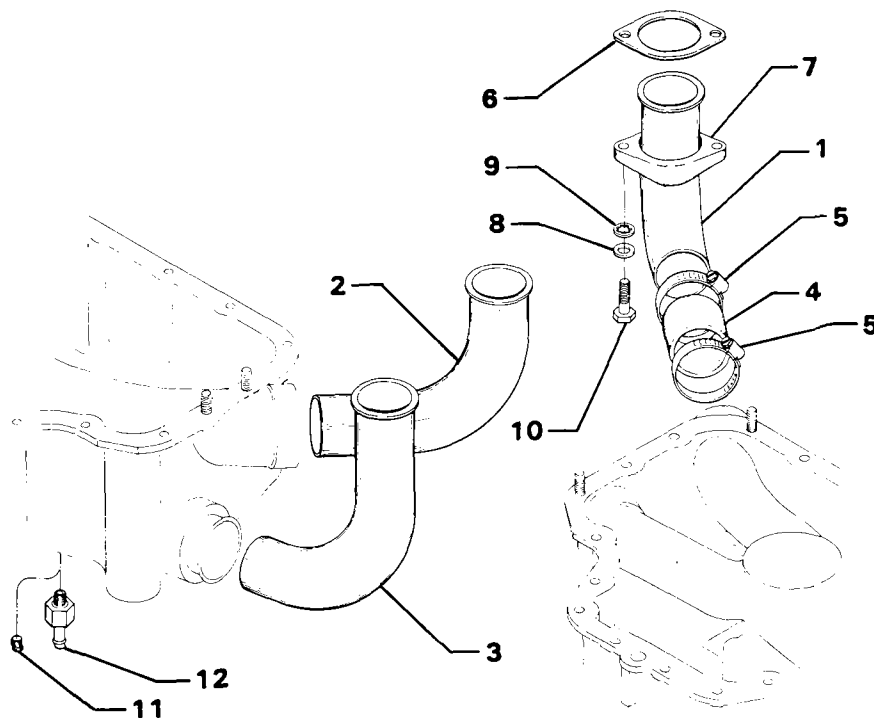


Figure 31.

OIL SUMP AND INDUCTION SYSTEM
INTAKE PIPE ASSEMBLY

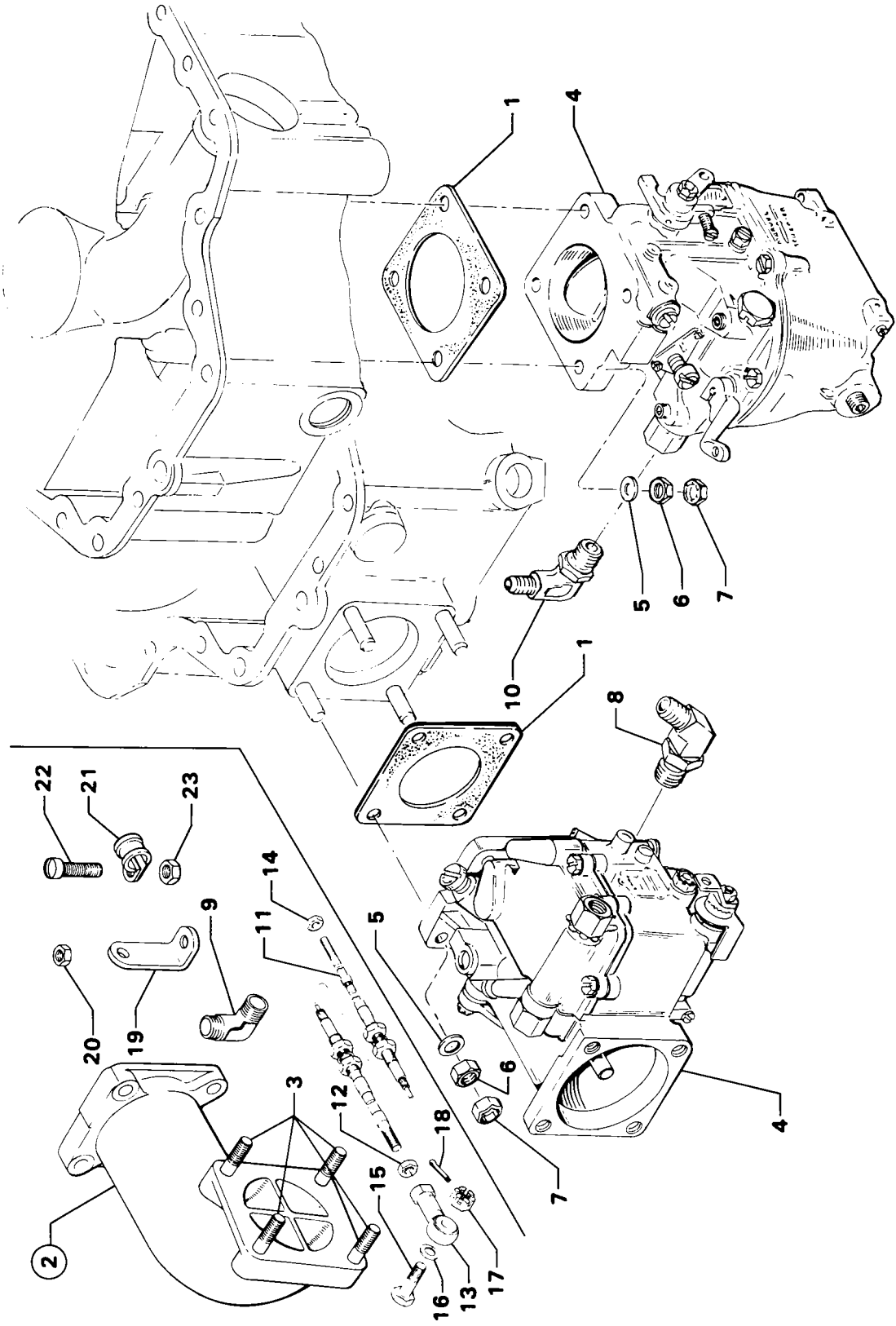
FIG. REF.	PART NUMBER	DESCRIPTION	ON ALL	QUANTITY PER ASSEMBLY														
				O-360						LO-360			TO-360					
				B 2 A	C 1 A	C 1 C	C 1 E	C 1 F	C 2 A	C 2 C	C 2 E	D 2 A	F 1 A 6	A 1 G 6 D	C 1 A 6 D			
1	70485	PIPE, Intake			4	4	4	4										
2	71712	PIPE, Intake, cyls. no. 1 and 2						2										
	LW-13944	PIPE, Intake, cyls. no. 1 and 2																2
	LW-16106	PIPE, Intake, cyls. no. 1 and 2											2					
3	71713	PIPE, intake, cyls. no. 3 and 4						2										
	LW-13945	PIPE, Intake, cyls. no. 3 and 4																2
	LW-16107	PIPE, Intake, cyls. no. 3 and 4											2					
4	69603	HOSE, 1-3/4 ID x 2-3/16 OD																
		x 1-3/4 long	4															
5	LW-15592-8-28	CLAMP, Hose	8															
6	71973	GASKET, 2 bolt flange, 1-7/8 ID	4															
7	73346	FLANGE, Intake pipe, upper			4	4	4	4	4	4	4	4	4				4	
	LW-14555	FLANGE, Intake pipe, upper											4					
8	STD-8	WASHER, 1/4 plain	8															
9	STD-160	WASHER, 1/4 lock, internal teeth	8															
10	STD-1215	BOLT, 1/4-20 x 1-1/4 long, hex. hd.	8															
11	1102*	PLUG, 1/8-27 NPT, Allen hd.						2						2				
12	LW-13807	ADAPTER ASSY., Fuel drain valve																2

* Assemble in fuel drain bosses in sump.



2288

Figure 32.

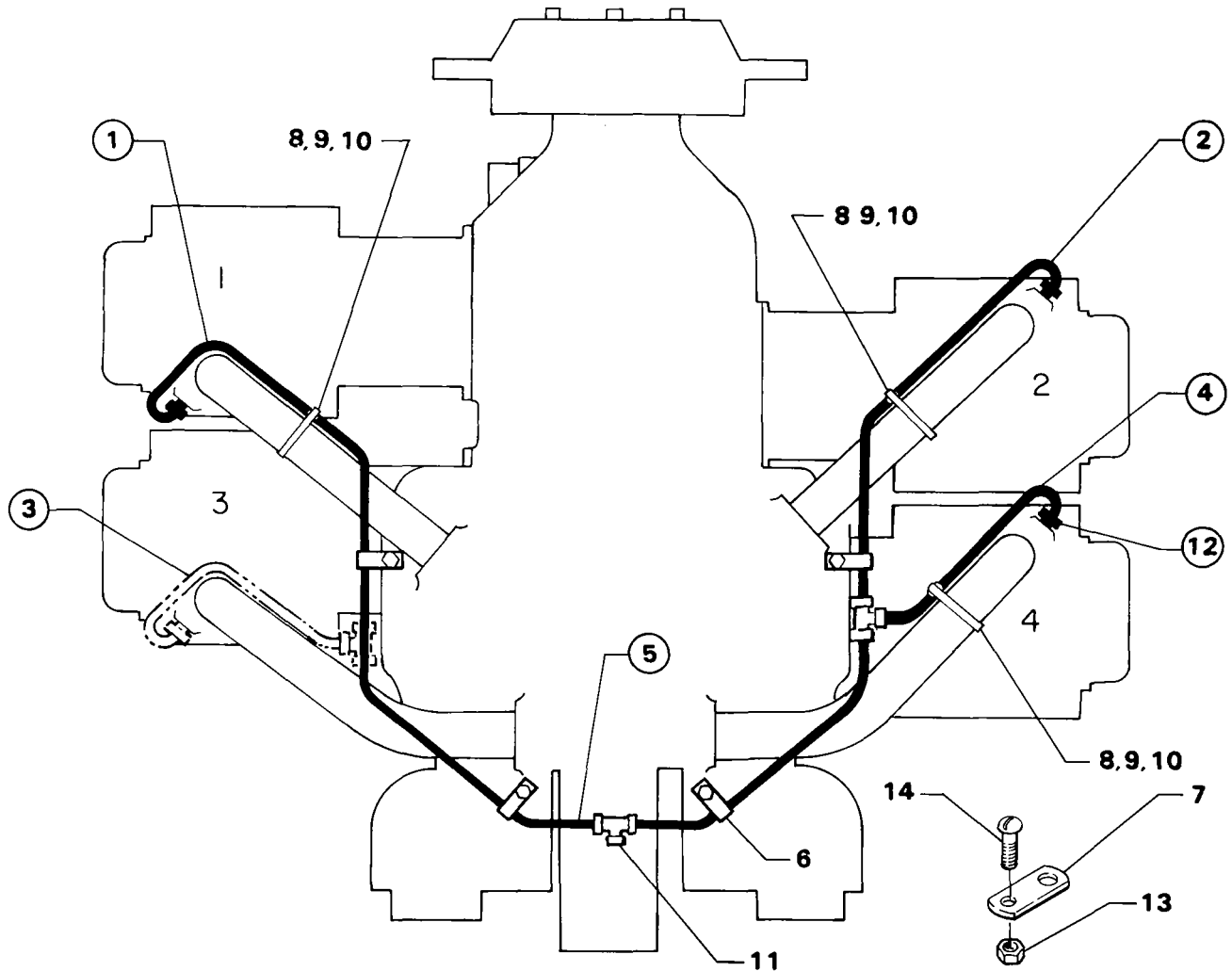


2432

Figure 33 - Carburetor Assembly

**OIL SUMP AND INDUCTION SYSTEM
PRIMING SYSTEM**

FIG. REF.	PART NUMBER	DESCRIPTION	ON ALL	QUANTITY PER ASSEMBLY															
				O-360						LO-360						TO-360			
				B 2 A	C 1 A	C 1 C	C 1 E	C 1 F	C 2 A	C 2 C	C 2 E	D 2 A	F 1 A 6				A 1 G 6 D		
1	LW-12098-1-284	TUBE ASSY., Primer, cyl. no. 1				1										1			
	LW-12098-1-170	TUBE ASSY., Primer, cyl. no. 1																	1
2	LW-12098-1-170	TUBE ASSY., Primer, cyl. no. 2				1										1			
	LW-12098-2-240	TUBE ASSY., Primer, cyl. no. 2																	1
3	LW-12098-1-134	TUBE ASSY., Primer, cyl. no. 3																	1
4	LW-12098-1-116	TUBE ASSY., Primer, cyl. no. 4				1										1			
5	LW-12098-0-100	TUBE ASSY., Primer, inter.				1													
	LW-12098-3-160	TUBE ASSY., Primer, inter.																	1
	LW-12098-0-134	TUBE ASSY., Primer, inter.														1			
6	LW-16266-25-13	CLIP, 3/16 ID for 1/4 dia.																	
		screw, cushion type				4										4			4
7	LW-14432	BRACKET, Support clamp														1			
8	71910	CLAMP, 1-3/4 ID with 1/4 dia, offset				3										3			3
9	STD-553	SCREW, No. 6-32 x 1/2 long, rd. hd.				3										3			3
10	AN365-632A	NUT, No. 6-32 self-locking				3										3			3
11	STD-853	TEE, Union, 1/4 tube				2										2			2
12	74225	NIPPLE ASSY., Primer				3										3			3
13	STD-670	NUT, No. 10-32														1			
14	STD-692	SCREW, No. 10-32														1			

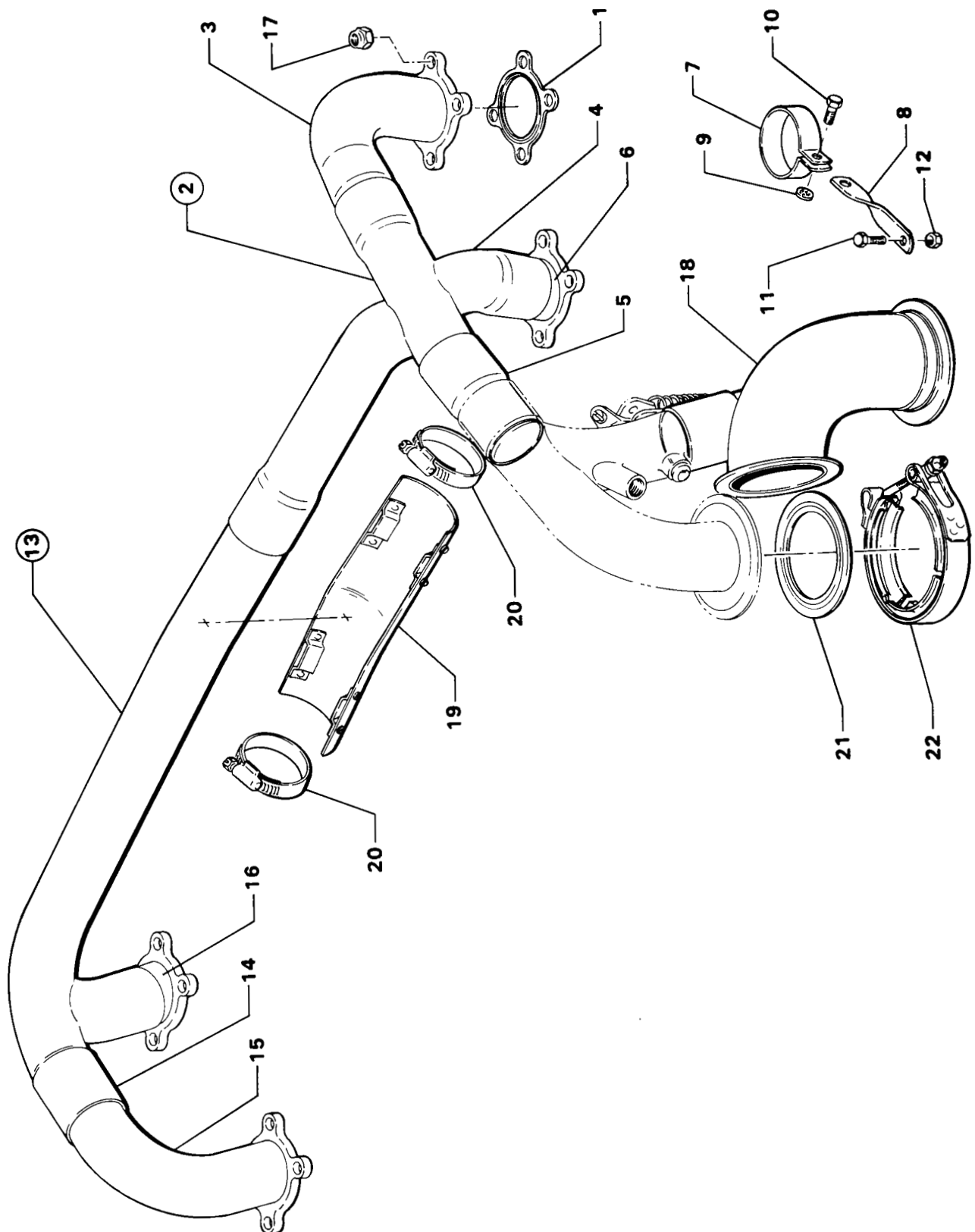


2280

Figure 34 - Priming System

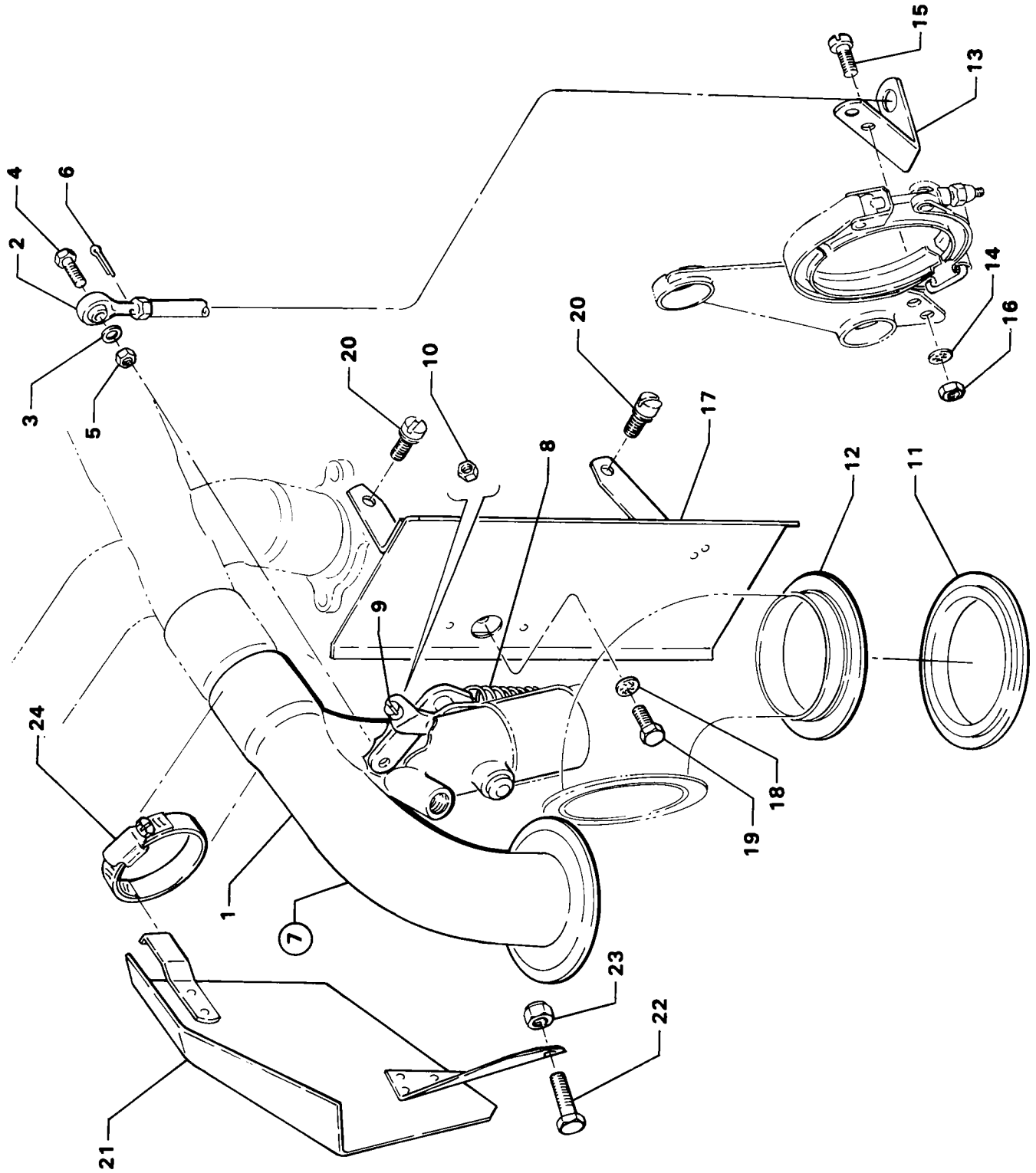
TURBOCHARGER AND EXHAUST SYSTEM
EXHAUST MANIFOLDING

FIG. REF.	PART NUMBER	DESCRIPTION	ON ALL	QUANTITY PER ASSEMBLY															
				O-360										LO-360			TO-360		
				B 2	C 1	C 1	C 1	C 1	C 2	C 2	C 2	D 2	F 1	A 6	A 1	G 6	D 6	C 1	A 6
1	LW-13938	GASKET, Exhaust flange																	8
2	LW-15691	MANIFOLD ASSY., Exhaust, right																	1
3	LW-14001	PIPE, Exhaust, cyl. no. 1																	1
4	LW-15689	PIPE, Exhaust, cyl. no. 3																	1
5	LW-15690	PIPE, Exhaust, inter.																	1
6	LW-11400	ADAPTER, Exhaust pipe																	1
7	LW-15693	CLAMP, Exhaust pipe																	1
8	LW-15694	STRAP, Exhaust pipe																	1
9	STD-160	WASHER, 1/4 internal lock																	1
10	LW-25-50	BOLT, 1/4-20 x 1/2 long, hex. hd.																	1
11	STD-1968	BOLT, 1/4-20 x 5/8 long, hex. hd.																	1
12	STD-2044	NUT, 1/4-20 UNF self-locking																	1
13	LW-13998	MANIFOLD ASSY., Exhaust, left																	1
14	LW-14002	PIPE, Exhaust, cyl. no. 2																	1
15	LW-14004	PIPE, Exhaust, cyl. no. 4																	1
16	LW-11400	ADAPTER, Exhaust pipe																	1
17	STD-2044	NUT, 1/4-20 self-locking																	16
18	LW-13986	PIPE, Exhaust, tail																	1
19	LW-13997	HEAT SHIELD																	1
20	LW-16474	CLAMP, Hose																	2
21	LW-14485	GASKET, Turbocharger inlet																	2
22	LW-13464	CLAMP, 3-11/16 dia.																	1



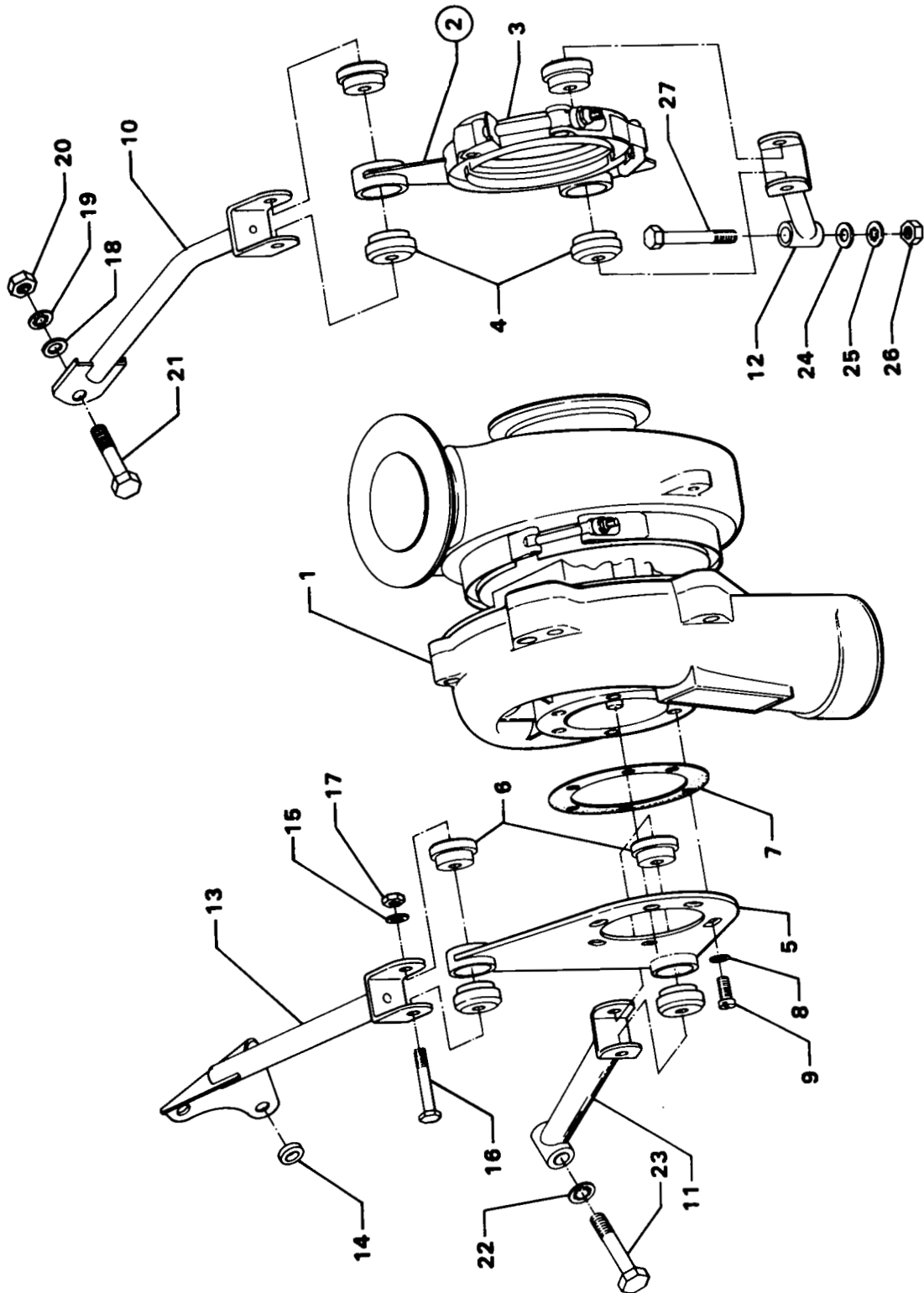
2310

Figure 35 - Exhaust Manifolding



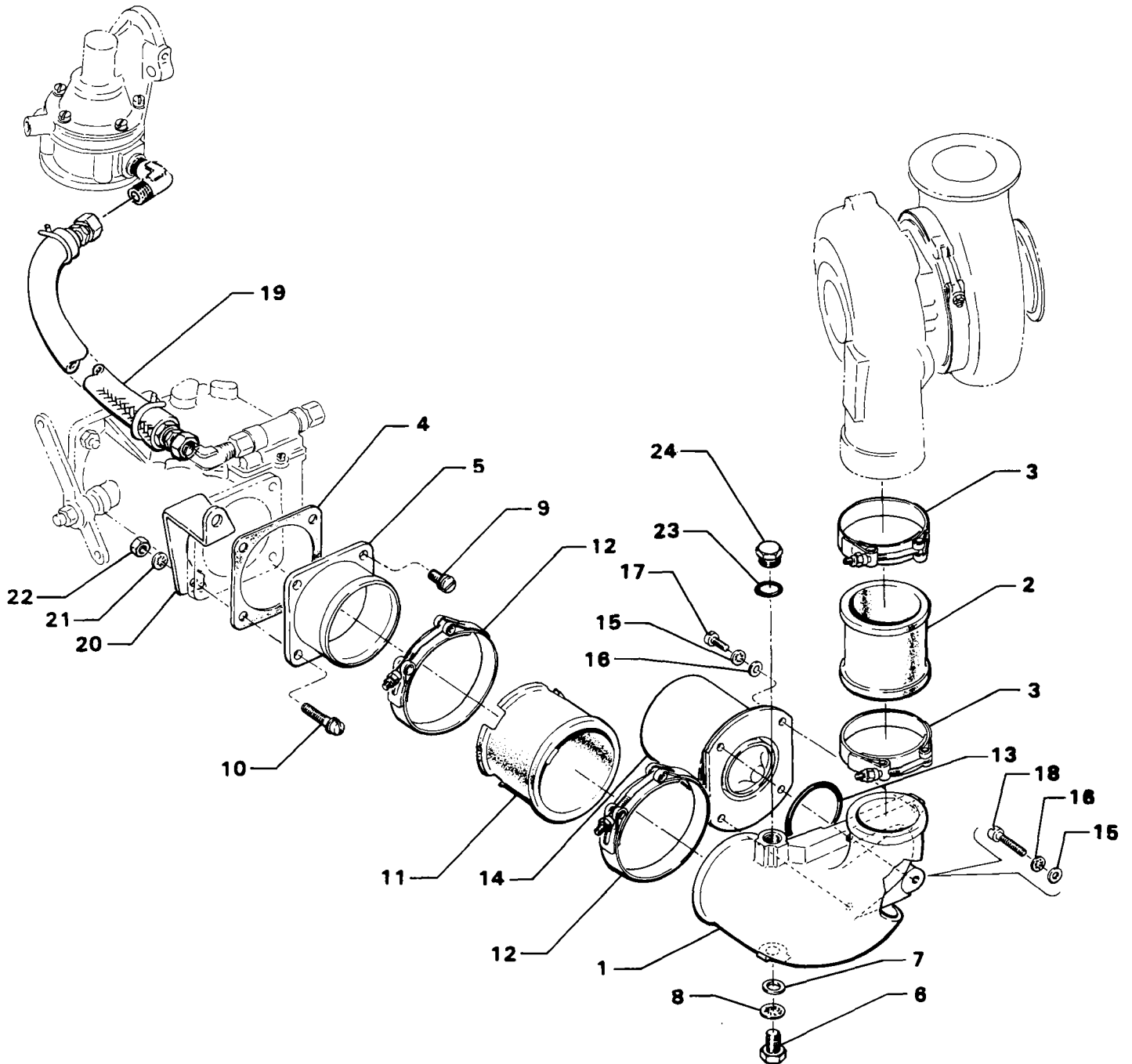
2311

Figure 36 - Transition, Wastegate and Rod End Assembly



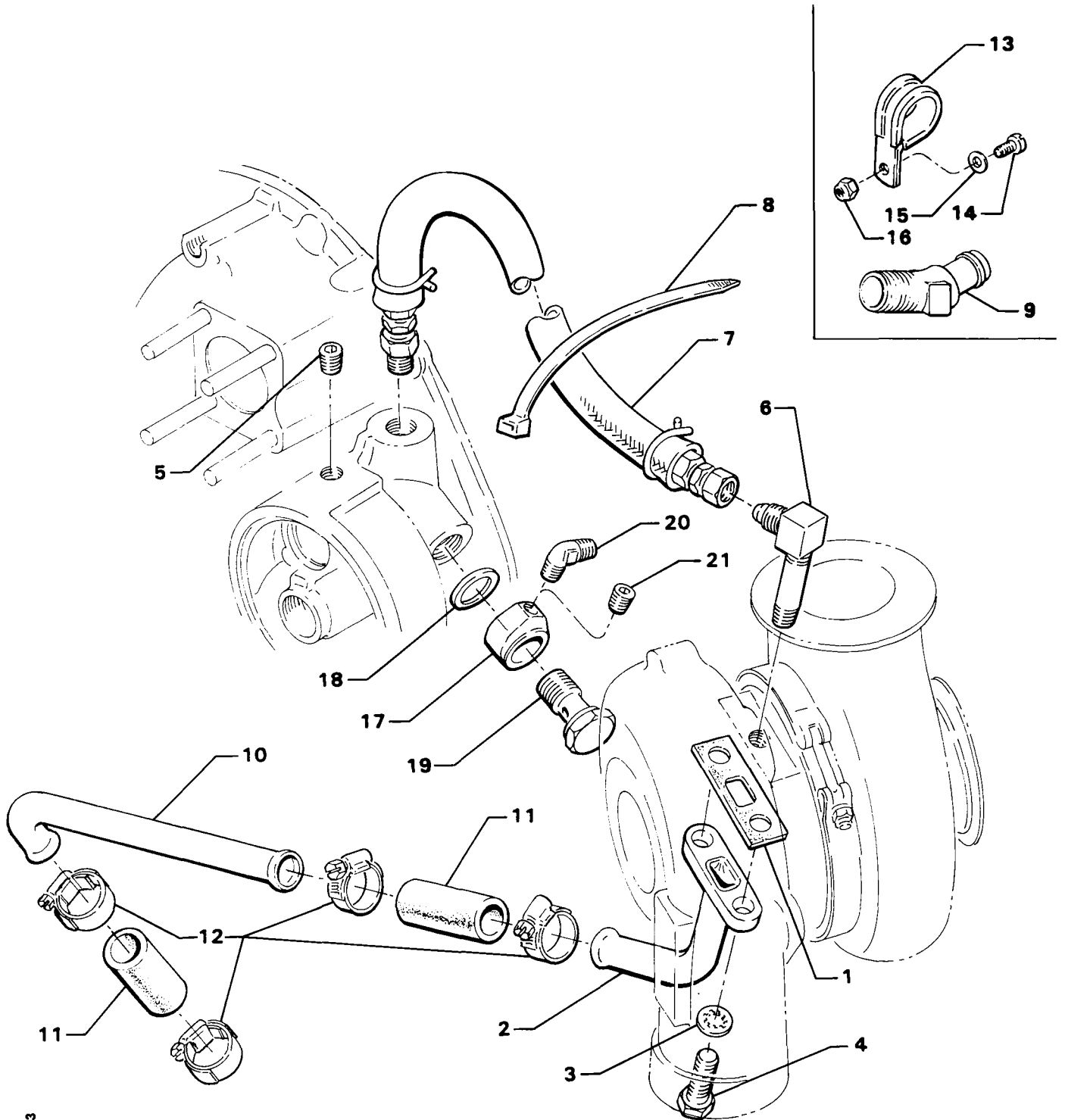
2324

Figure 37 - Turbocharger Assembly and Related Parts



2312

Figure 38 - Turbocharger Inlet Hosed and Related Parts



2313

Figure 39 - Oil Drain Tubes, Hoses and Related Parts

SECTION 8
SERVICE KIT SECTION
SEAL AND GASKET SET
O-360-C SERIES

Part No.	Part Name	Qty.
75439-1	SEAL AND GASKET SET	1
AN901-8A	GASKET	1
STD-111	GASKET, Annular	1
STD-208	SEAL, Oil	1
STD-213	SEAL, Oil (fuel pump drive)	1
STD-294	GASKET, Annular	2
STD-1045	GASKET, Annular	1
1691-C	GASKET, Fuel pump pad	1
8313	GASKET, Vacuum pump	1
60096	GASKET, Fuel pump	1
61156	LOCKPLATE, Crankshaft gear	1
LW-14260	SEAL, Tachometer	1
61173	GASKET, Oil press. hsg.	1
61183	GASKET, Accessory adapter	1
61523	BOX, Set-up	1
62224	GASKET, Magneto adapter	3
62922	SEAL, Shroud tube	8
65321	GASKET, Exhaust flange	4
66224	GASKET, Carburetor	2
68315	GASKET, Accessory drive adapter	1
LW-13353	GASKET, Oil sump	1
69164	GASKET, Fuel pump adapter	1
69345	SPACER	4
69551	GASKET, Accessory pad cover	1
70310	SEAL, Shroud tube	8
71481	RING, Oil seal	4
71973	GASKET, Intake flange	4
72053	GASKET, Governor drive pad	2
72059	GASKET	1
72075	SEAL, Oil	6
72078	LOCKPLATE, Cam gear	2
72091	RING, Oil seal	2
73383	LOCKPLATE	2
73817	LOCKPLATE, Crankshaft idler gear shaft	2
73818	GASKET, Accessory housing	1
74065	RING, Oil level gage seal	1
74068	RING, Oil level gage seal	1
75906	GASKET, Rocker box cover	4
76510	GASKET	1
76940	SEAL, Crankshaft oil	1
LW-13792	SEAL, Crankshaft oil	1
LW-12272	LOCKPLATE, Shroud tube	4
LW-12681	GASKET, Magneto	2
LW-12795	GASKET	1
LW-14995	SPRING	4
LW-10332	LOCKPLATE	1
70455	GASKET	1
STD-1763	PALNUT	4

SECTION 8
SERVICE KIT SECTION
SEAL AND GASKET SET
LO-360-A1G6D

Part No.	Part Name	Qty.
LW-12945	SEAL AND GASKET SET	1
MS16625-1081	RING, Internal retaining	1
MS16625-1100	RING, Internal retaining	1
MS29512-10	SEAL	3
STD-111	GASKET	1
STD-208	SEAL, Oil	1
STD-294	GASKET	2
STD-1045	GASKET	1
8313	GASKET	1
60096	GASKET	1
LW-14260	SEAL, Tachometer drive	1
61523	BOX, Set-up	1
62922	SEAL, Shroud tube	8
65321	GASKET, Exhaust flange	8
66224	GASKET, Carburetor	1
LW-13353	GASKET, Oil sump	1
71481	SEAL, Cylinder base	4
71973	GASKET	4
72053	GASKET, Governor	1
72075	"O" RING	6
72091	RING, Oil seal	2
73383	LOCKPLATE	2
73818	GASKET, Accessory housing	1
74068	RING, Oil level gage	1
75906	GASKET, Rocker box cover	4
LW-12681	GASKET, Dual magneto	1
LW-10332	LOCKPLATE, Crankshaft	1
LW-13792	SEAL, Crankshaft	1
72059	GASKET, Oil level gage	1
70310	SEAL, Shroud tube	8
LW-12272	LOCKPLATE	4
LW-14995	SPRING	4
77154	GASKET, Carburetor	1
74065	RING, Oil level gage	1

SECTION 8
SERVICE KIT SECTION
SEAL AND GASKET SET
TO-360-C1A6D

Part No.	Part Name	Qty.
LW-14976	SEAL AND GASKET SET	1
AN901-8A	GASKET	1
STD-111	GASKET	1
STD-208	SEAL, Oil	1
STD-294	GASKET	2
STD-1045	GASKET	1
MS29512-4	SEAL, Oil	1
MS29512-10	SEAL, Oil	3
MS29513-138	SEAL, "O" ring	1
LW-10332	LOCKPLATE, Crankshaft	1
LW-11665	THRUST BUTTON	16
LW-12681	GASKET, Magneto	2
LW-13353	GASKET, Oil sump	1
LW-13473	GASKET, Carburetor inlet adapter	1
LW-13476	GASKET, Turbo comp. inlet	2
LW-13938	GASKET, Exhaust flange	8
LW-14063	GASKET, V-band coupling	1
LW-14260	SEAL, Tach. drive	1
LW-14485	GASKET, Turbo inlet	2
8313	GASKET, Vacuum pump	2
66732	GASKET, Rocker shaft cover	8
70310	SEAL, Shroud tube	16
70455	GASKET	1
71481	SEAL, Shroud tube	4
71973	GASKET, Intake flange	4
72053	GASKET, Governor	1
72059	GASKET	1
72075	RING, Oil seal	6
72091	RING, Oil seal	2
73383	LOCKPLATE	2
73818	GASKET, Accessory housing	1
74065	RING, Oil level gage	1
76036	GASKET, Rocker box cover	4
77154	GASKET, Carburetor	2
61523	BOX, Set-up	1
LW-15628	SEAL, Crankshaft oil	1
LW-14528	GASKET, Turbo oil drain	1

SECTION 8
SERVICE KIT SECTION
CYLINDER, PISTON AND RING ASSY.
O-360-C SERIES; LO-360-A1G6D

Part No.	Part Name	Qty.
76296	CYLINDER, PISTON AND RING ASSY.	1
STD-1411	NUT, Plain, 1/4-20	1
STD-1925	SCREW	6
60009	KEY, Valve, intake	2
62922	SEAL, Shroud tube	2
LW-13790	SHAFT, Valve rocker	1
60828	PLUG, Piston pin	2
75906	GASKET, Rocker box cover	1
61247	COVER, Rocker box	1
MS13998-3	CAP, Valve stem, exhaust (rotator type)	1
LW-11800	SPRING, Valve, outer	2
65441	SEAT, Valve spring, lower (intake)	1
LW-11795	SPRING, Valve, inner	2
LW-10077	SEAT, Valve spring, upper, intake	1
LW-14995	SPRING, Shroud tube	1
LW-12272	LOCKPLATE, Shroud tube	1
69444	ROCKER ASSY., Valve intake	1
LW-10076	SEAT, Valve spring, upper, exhaust (rotator type)	1
LW-14077	PIN, Piston	1
70310	SEAL, Shroud tube	2
71195	BOX, Set-up	1
71481	SEAL, Cylinder base	1
74541	VALVE, Exhaust (rotator type) sodium cooled chrome stem	1
MS13997-3	KEY, Valve, exhaust (rotator type)	2
73857 or		
LW-12328	RING, Piston, oil reg. (ch.) (expander type)	1
73938	VALVE, Intake	1
74241	RING, Piston compression (ch.)	2
LW-12427	CYLINDER AND HEAD ASSY., Nitrided, straight valve head	1
75089	PISTON	1
74636	ROCKER ASSY., Exhaust	1
LW-13323	SEAT, Valve spring lower, exhaust	1
LW-12892	THRUST BUTTON	2
STD-1215	BOLT	2
72198	PLUG	2
SSP672	TAG	1
LW-11775	PLUG, Piston pin (alum.)	2
SSP2472	TAG	1

SECTION 8
SERVICE KIT SECTION
CYLINDER, PISTON AND RING ASSY.
TO-360-C1A6D

Part No.	Part Name	Qty.
LW-14977	CYLINDER, PISTON AND RING ASSY.	1
STD-160	WASHER	2
STD-1215	BOLT	2
STD-2059	SCREW	8
MS13997-3	KEY, Valve, exhaust	2
MS13998-3	CAP, Valve, exhaust	1
LW-10076	SEAT, Valve spring upper	1
LW-15732	VALVE, Exhaust	1
LW-11665	THRUST BUTTON	4
LW-11775	PLUG, Piston pin	2
LW-11796	SPRING, Valve outer	2
LW-11797	SPRING, Valve inner	2
LW-13262	VALVE, Intake	1
LW-13964	CYLINDER ASSY., Nitrided	1
LW-14077	PIN, Piston	1
LW-14433	COVER ASSY., Rocker box	1
LW-14893	SEAT, Valve spring lower, intake	1
LW-14894	SEAT, Valve spring lower, exhaust	1
LW-10545-S	PISTON	1
62388	CAP, Valve stem, intake	1
66732	GASKET, Rocker shaft cover	2
69532	SEAT, Valve spring upper, intake	1
70310	SEAL, Shroud tube	4
71195	BOX, Set-up	1
71481	SEAL, Cylinder base	1
71549	WASHER, Valve washer thrust	2
72050	KEY, Valve, intake	2
72620	SHAFT, Valve rocker	2
72710	COVER, Rocker shaft	2
73857	RING, Piston, oil reg.	1
74241	RING, Piston, comp.	2
76036	GASKET, Rocker box cover	1
76266	ROCKER ASSY., Valve	2

NUMERICAL INDEX

PART NO.	PART NAME	PAGE NO.	PART NO.	PART NAME	PAGE NO.
AN3-7	Bolt	6-3	LW-10893	Housing Assy.	2-1
AN3C7	Bolt	7-3	LW-10945	Roller	1-5
AN320C3	Nut	7-3	LW-10977	Roller	1-5
AN345C10	Nut	6-3	LW-10979	Alternator Assy.	5-5
AN365-632A	Nut	4-5	LW-11021	Bearing	1-7
AN365-632A	Nut	4-7	LW-11235	Cap	2-9
AN365-632A	Nut	6-5	LW-11400	Adapter	7-1
AN365-1024	Nut	6-3	LW-11485	Tube	3-5
AN500-10-18	Screw	7-7	LW-11519	Support Assy.	1-13
AN500-416-18	Screw	4-5	LW-11665	Thrust Button	3-3
AN500-416-18	Screw	4-7	LW-11713	Spring	1-7
AN500A416-10	Screw	6-3	LW-11750	Connecting Rod Assy.	3-1
AN501-416-10	Screw	7-3	LW-11775	Plug	3-1
AN565B1032H5	Set Screw	1-8	LW-11795	Spring	3-5
AN6-13	Bolt	5-3	LW-11796	Spring	3-5
AN6-14	Bolt	5-3	LW-11797	Spring	3-5
AN6-16	Bolt	5-3	LW-11800	Spring	3-5
AN6-32	Bolt	5-3	LW-12050	Camshaft	1-5
AN6-34A	Bolt	1-11	LW-12056	Spacer	7-9
AN8-14A	Bolt	1-5	LW-12083	Switch	5-6
AN814-4L	Plug	7-7	LW-12085	Switch	5-6
AN814-10L	Plug	2-9	LW-12098-0-100	Tube Assy.	6-5
AN844-10D	Elbow	2-9	LW-12098-1-116	Tube Assy.	6-5
AN901-8A	Gasket	7-9	LW-12098-0-134	Tube Assy.	6-5
AN960-616L	Washer	1-11	LW-12098-1-134	Tube Assy.	6-5
AN960C10L	Washer	7-3	LW-12098-1-170	Tube Assy.	6-5
LW-10077	Seat	3-5	LW-12098-1-284	Tube Assy.	6-5
LW-10179	Regulator	5-1	LW-12098-2-240	Tube Assy.	6-5
LW-10185	Regulator	5-1	LW-12098-3-160	Tube Assy.	6-5
LW-10284	Gear	1-5	LW-12173	Crankshaft Assy.	1-5
LW-10286	Gear Assy.	1-9	LW-12174	Crk'shaft & Ct'wt. Assy.	1-5
LW-10296	Gear Assy.	1-9	LW-12186	Nut	3-1
LW-10298	Shaft	1-9	LW-12272	Lockplate	3-5
LW-10299	Shaft	1-9	LW-12335	Crankshaft Assy.	1-5
LW-10305	Gear Assy.	2-8	LW-12336	Crk'shaft & Ct'wt. Assy.	1-5
LW-10320	Sleeve	2-9	LW-12347	Plate	2-5
LW-10321	Spring	2-9	LW-12427	Cylinder and Head Assy.	3-2
LW-10332	Lockplate	1-5	LW-12545	Plug	6-1
LW-10341	Insert	2-1	LW-12589	Insert	2-1
LW-10342	Body	2-3	LW-12595	Bolt	3-1
LW-10389	Elbow	4-5	LW-12596	Bolt	3-1
LW-10400	Ferrule	4-5	LW-12681	Gasket	4-1
LW-10545	Piston	3-1	LW-12681	Gasket	4-3
LW-10551	Gear	1-13	LW-12688	Seat	3-2
LW-10647	Dowel	1-1	LW-12706	Adapter	4-1
LW-10729	Link	5-3	LW-12739	Strap	5-5
LW-10811	Terminal	4-5	LW-12795	Gasket	2-9
LW-10812	Collar	4-5	LW-12798-4S130	Hose Assy.	7-7
LW-10814	Spring	4-5	LW-12798-4S130	Hose Assy.	7-9
LW-10887	Housing Assy.	2-1	LW-12832	Alternator Assy.	5-5

NUMERICAL INDEX (Cont).

PART NO.	PART NAME	PAGE NO.	PART NO.	PART NAME	PAGE NO.
LW-12892	Thrust Button	3-3	LW-13959	Strut	7-5
LW-12911	Gear Assy.	1-9	LW-13961	Mount Assy.	7-5
LW-12913	Thrust Button	2-5	LW-13964	Cylinder and Head Assy.	3-2
LW-12914	Gear Assy.	2-5	LW-13965	Turbocharger	7-5
LW-12920	Tube Assy.	2-4	LW-13971	Heat Shield	7-3
LW-13039	Bracket	5-3	LW-13976	Tube Assy.	3-6
LW-13123	Baffle	3-2	LW-13977	Tube Assy.	3-6
LW-13209	Bearing	3-1	LW-13978	Tube Assy.	3-6
LW-13215	Oil Filter	2-9	LW-13985	Flange	7-3
LW-13216	Oil Filter	2-9	LW-13986	Pipe	7-1
LW-13262	Valve	3-5	LW-13991	Support	7-3
LW-13323	Seat	3-5	LW-13997	Heat Shield	7-1
LW-13353	Gasket	6-1	LW-13998	Manifold Assy.	7-1
LW-13365	Brace	5-3	LW-14001	Pipe	7-1
LW-13422	Connecting Rod Assy.	3-1	LW-14002	Pipe	7-1
LW-13429	Rod End	6-3	LW-14004	Pipe	7-1
LW-13464	Clamp	7-1	LW-14017	Baffle	7-3
LW-13473	Gasket	7-7	LW-14018	Tube Assy.	3-5
LW-13476	Gasket	7-5	LW-14021	Shaft	1-8
LW-13478	Elbow	7-9	LW-14040	Gear Assy.	2-3
LW-13521	Bearing	3-1	LW-14045	Guide	3-2
LW-13565	Spring	3-5	LW-14060	Clip	4-1
LW-13618	Spacer	3-5	LW-14060	Clip	4-7
LW-13619	Washer	3-5	LW-14063	Gasket	7-3
LW-13641	Cushion	4-3	LW-14077	Pin	3-1
LW-13643	Gear	4-3	LW-14078	Pin	3-1
LW-13671	Spring	7-3	LW-14214	Starter	5-6
LW-13683	Bearing	1-7	LW-14215	Starter	5-6
LW-13775	Impeller Assy	2-3	LW-14260	Seal	2-3
LW-13779	Valve Assy.	7-7	LW-14308	Alternator	5-5
LW-13790	Shaft	3-3	LW-14316	Alternator	5-5
LW-13792	Seal	1-7	LW-14319	Alternator	5-5
LW-13793	Stud	1-1	LW-14324	Alternator	5-5
LW-13796	Shaft	1-9	LW-14394	Hose	7-9
LW-13807	Adapter Assy.	6-2	LW-14432	Bracket	6-5
LW-13808	Crankcase Assy.	1-1	LW-14433	Cover Assy.	3-3
LW-13809	Crankcase Assy.	1-1	LW-14485	Gasket	7-1
LW-13819	Crankcase Assy.	1-1	LW-14487	Adapter Assy.	6-3
LW-13884	Bearing	1-7	LW-14488	Duct	7-7
LW-13885	Bearing	1-7	LW-14528	Gasket	7-9
LW-13896	Plug	1-8	LW-14529	Plug	1-5
LW-13904	Kit	2-9	LW-14555	Flange	6-2
LW-13906	Filter Assy.	2-9	LW-14666	Crankcase Assy.	1-1
LW-13923	Bushing	3-1	LW-14714	Connector	6-3
LW-13938	Gasket	7-1	LW-14719	Bracket	7-7
LW-13944	Pipe	6-2	LW-14724	Bracket	6-3
LW-13945	Pipe	6-2	LW-14758	Gage Assy.	1-3
LW-13956	Strut	7-5	LW-14759	Gage Assy.	1-3
LW-13957	Strut	7-5	LW-14764	Gage Assy.	1-3
LW-13958	Strut	7-5	LW-14780	Gage Assy.	1-3

LW-14782	Gage Assy.	1-3	LW-15858-62-269	Clamp	7-7
LW-14790	Gage Assy.	1-3	LW-15858-62-350	Clamp	7-7
LW-14795	Gage Assy.	1-3	LW-15859	Hose	7-7
LW-14820	Ring	1-5	LW-15886	Adapter	7-7
LW-14827	Camshaft	1-5	LW-15895	Regulator	5-1
LW-14828	Reducer	2-9	LW-15957	Carburetor	6-3
LW-14833	Baffle Assy.	3-6	LW-15959	Carburetor	6-3
LW-14875	Bracket	4-3	LW-16012	Bolt	7-9
LW-14893	Seat	3-5	LW-16028	Carburetor	6-3
LW-14894	Seat	3-5	LW-16036	Flange	7-9
LW-14944	Trans. & Wst'gate Assy.	7-3	LW-16064	Support Assy.	1-13
LW-14995	Spring	3-5	LW-16106	Pipe	6-2
LW-15472	Fuel Pump	2-7	LW-16107	Pipe	6-2
LW-15473	Fuel Pump	2-7	LW-16109	Crankcase Assy.	1-1
LW-15490	Hose	7-7	LW-16154	Sump Assy.	6-1
LW-15540	Crankcase Assy.	1-5	LW-16266-10-75	Clamp	4-3
LW-15541	Crk'shaft & Ct'wt. Assy.	1-5	LW-16266-10-88	Clamp	7-9
LW-15542	Crankcase Assy.	1-1	LW-16266-25-13	Clamp	6-5
LW-15555	Spacer	7-5	LW-16266-25-25	Clamp	6-3
LW-15567	Body Assy.	2-3	LW-16266-25-38	Clamp	2-4
LW-15571	Starter	5-6	LW-163005-2	Magneto	4-1
LW-15572	Starter	5-6	LW-163045-3	Magneto	4-1
LW-15573	Starter	5-6	LW-16335	Fuel Pump	2-7
LW-15592-5-05	Clamp	3-6	LW-16471	Support Assy.	1-13
LW-15592-8-08	Clamp	7-9	LW-16474	Clamp	7-1
LW-15592-8-28	Clamp	6-2	LW-16475	Seat	3-5
LW-15592-8-28	Clamp	7-3	LW-16518	Carburetor	6-3
LW-15628	Seal	1-7	LW-16549	Harness Assy.	4-1
LW-15635	Mag. & Harness Assy.	4-1	LW-16550	Harness Assy.	4-1
LW-15636	Magneto	4-1	LW-16580	Tube Assy.	1-3
LW-15637	Mag. & Harness Assy.	4-1	LW-16591	Mag. & Harness Assy.	4-1
LW-15638	Magneto	4-1	LW-16625	Carburetor	6-3
LW-15674	Carburetor	6-3	LW-16650	Mag. & Harness Assy.	4-1
LW-15689	Pipe	7-1	LW-16651	Mag. & Harness Assy.	4-1
LW-15690	Pipe	7-1	LW-16716	Tube	7-9
LW-15691	Manifold Assy.	7-1	LW-16471	Elbow	7-9
LW-15692	Bushing	7-5	LW-16871	Carburetor	6-3
LW-15693	Clamp	7-1	LW-17160	Crankshaft Assy.	1-5
LW-15694	Strap	7-1	LW-17161	Crankshaft Assy.	1-5
LW-15695	Baffle Assy.	3-6	LW-17254	Crankshaft Assy.	1-5
LW-15732	Valve	3-5	LW-17257	Crankshaft Assy.	1-5
LW-15765	Rod End	7-3	LW-17281	Crk'shaft & Ct'wt. Assy.	1-5
LW-15766	Trans., Wst'gate and Rod End Assy.	7-3	LW-17284	Crk'shaft & Ct'wt. Assy.	1-5
LW-15769	Mount Assy.	7-5	LW-25-.50	Bolt	7-1
LW-15796	Sump Assy.	6-1	LW-31H.75	Bolt	5-2
LW-157208	Kit Assy.	4-1	LW-31H.75	Bolt	5-3
LW-157209	Kit Assy.	4-1	LW-320298-2	Clip	4-3
LW-157209	Kit	4-3	LW-320300-1	Clip	4-3
			LW-38-0.59	Bolt	7-7
			LW-38-.75	Bolt	2-7

NUMERICAL INDEX (Cont).

PART NO.	PART NAME	PAGE NO.	PART NO.	PART NAME	PAGE NO.
LW-382555-13	Magneto	4-3	STD-35	Washer	2-3
LW-382555-14	Magneto	4-3	STD-35	Washer	2-4
LW-382555-141	Magneto	4-3	STD-35	Washer	2-5
LW-384407-303	Harness	4-3	STD-35	Washer	3-3
LW-385124-112	Magneto	4-3	STD-35	Washer	5-2
LW-385124-118	Magneto	4-3	STD-35	Washer	5-3
LW-385164-112	Magneto	4-3	STD-35	Washer	5-6
LW-51360-29	Magneto	4-1	STD-35	Washer	6-3
LW-51360-37	Magneto	4-1	STD-35	Washer	7-5
LW-52305-1	Kit Assy.	4-1	STD-63	Nut	6-3
LW-620026-2	Clip	4-1	STD-63	Nut	7-3
LW-620026-2	Clip	4-3	STD-68	Pin	5-2
LW-620028-1	Clip	4-3	STD-68	Pin	6-3
LW-620032-1	Clip	4-3	STD-68	Pin	7-3
LW-620036-1	Clip	4-3	STD-82	Screw	7-5
LW-684400-303	Harness	4-3	STD-91	Plug	6-1
LW-684400-305	Harness	4-3	STD-111	Gasket	6-1
LW-M-2375	Plate	4-7	STD-122	Washer	6-3
LW-M-2403	Harness Assy.	4-7	STD-160	Washer	1-11
LW-M-2404	Harness Assy.	4-7	STD-160	Washer	2-3
M-1985-48	Lead Assy.	4-7	STD-160	Washer	2-8
MS124703	Insert	2-1	STD-160	Washer	2-9
MS13997-3	Key	3-5	STD-160	Washer	4-5
MS13998-3	Cap	3-5	STD-160	Washer	4-7
MS16625-1081	Ring	1-9	STD-160	Washer	6-1
MS16625-1100	Ring	2-9	STD-160	Washer	6-2
MS20822-4-4	Elbow	6-3	STD-160	Washer	7-1
MS20823-6D	Elbow	3-2	STD-160	Washer	7-3
MS20823-8	Elbow	2-9	STD-160	Washer	7-7
MS29512-4	Seal	7-7	STD-208	Oil Seal	2-8
MS29512-10	Seal	2-9	STD-251	Washer	7-7
MS29513-138	Seal	7-7	STD-294	Gasket	2-9
STD-8	Washer	1-11	STD-303	Nut	6-3
STD-8	Washer	2-3	STD-375	Screw	7-7
STD-8	Washer	2-8	STD-425	Washer	1-7
STD-8	Washer	2-9	STD-425	Washer	7-7
STD-8	Washer	3-2	STD-425	Washer	7-9
STD-8	Washer	4-3	STD-475	Washer	1-11
STD-8	Washer	4-5	STD-475	Washer	2-4
STD-8	Washer	4-7	STD-475	Washer	2-5
STD-8	Washer	6-1	STD-475	Washer	3-3
STD-8	Washer	6-2	STD-475	Washer	4-1
STD-8	Washer	7-5	STD-475	Washer	4-3
STD-9	Nut	7-3	STD-475	Washer	5-3
STD-19	Dowel	1-8	STD-475	Washer	5-6
STD-28	Washer	7-5	STD-475	Washer	7-5
STD-33	Washer	1-11	STD-514	Dowel	1-1
STD-33	Washer	2-7	STD-551	Plug	6-1
STD-33	Washer	7-7	STD-553	Screw	4-5
STD-35	Washer	1-11	STD-553	Screw	4-7

NUMERICAL INDEX (Cont).

PART NO.	PART NAME	PAGE NO.	PART NO.	PART NAME	PAGE NO.
STD-553	Screw	6-5	STD-1410	Nut	7-5
STD-557	Dowel	1-1	STD-1411	Nut	1-11
STD-596	Nut	1-11	STD-1411	Nut	2-8
STD-670	Nut	4-3	STD-1411	Nut	2-9
STD-670	Nut	6-5	STD-1411	Nut	3-5
STD-670	Nut	7-9	STD-1411	Nut	4-5
STD-678	Washer	1-11	STD-1411	Nut	4-7
STD-678	Washer	2-7	STD-1411	Nut	6-1
STD-678	Washer	7-7	STD-1411	Nut	7-5
STD-678	Washer	7-9	STD-1411	Nut	7-7
STD-684	Nipple	3-6	STD-1414	Bolt	1-11
STD-690	Washer	5-3	STD-1414	Bolt	2-3
STD-692	Screw	4-3	STD-1414	Bolt	7-5
STD-692	Screw	6-5	STD-1416	Bolt	1-11
STD-696	Washer	4-5	STD-1419	Bolt	1-11
STD-700	Elbow	2-4	STD-1419	Bolt	6-1
STD-713	Pin	5-3	STD-1420	Nut	2-3
STD-761	Cotter Pin	4-1	STD-1420	Nut	5-2
STD-783	Plug	2-3	STD-1420	Nut	5-6
STD-783	Plug	2-5	STD-1623	Insert	1-1
STD-784	Plug	2-1	STD-1685	Nut	6-3
STD-784	Plug	2-9	STD-1727	Washer	4-1
STD-798	Dowel	1-8	STD-1727	Washer	5-2
STD-847	Screw	1-5	STD-1727	Washer	5-3
STD-853	Tee	6-5	STD-1763	Locknut	6-3
STD-860	Screw	7-3	STD-1774	Pin	2-5
STD-872	Nut	1-11	STD-1774	Pin	2-8
STD-872	Nut	5-3	STD-1815	Nut	5-3
STD-969	Screw	7-9	STD-1821	Hose	3-6
STD-1045	Gasket	1-7	STD-1826	Screw	7-3
STD-1065	Dowel	1-5	STD-1828	Bolt	5-3
STD-1204	Bolt	2-3	STD-1828	Bolt	7-5
STD-1204	Bolt	6-1	STD-1838	Bolt	1-11
STD-1211	Plug	1-5	STD-1838	Bolt	2-4
STD-1215	Bolt	2-3	STD-1838	Bolt	5-2
STD-1215	Screw	4-5	STD-1838	Bolt	5-3
STD-1215	Screw	4-7	STD-1838	Bolt	7-3
STD-1215	Bolt	6-2	STD-1851	Bolt	5-2
STD-1221	Ring	2-5	STD-1856	Screw	2-9
STD-1223	Nipple	3-6	STD-1858	Bolt	5-3
STD-1339	Plug	1-1	STD-1872	Insert	3-2
STD-1339	Plug	2-3	STD-1874	Screw	4-3
STD-1353	Insert	3-2	STD-1875	Bolt	2-3
STD-1409	Nut	1-11	STD-1882	Screw	2-7
STD-1410	Nut	2-5	STD-1885	Bolt	7-5
STD-1410	Nut	3-3	STD-1889	Bolt	5-6
STD-1410	Nut	4-1	STD-1901	Drive Stud	6-1
STD-1410	Nut	4-3	STD-1916	Screw	7-7
STD-1410	Nut	5-6	STD-1916	Screw	7-3
STD-1410	Nut	6-3	STD-1925	Screw	3-2

NUMERICAL INDEX (Cont).

PART NO.	PART NAME	PAGE NO.	PART NO.	PART NAME	PAGE NO.
STD-1925	Screw	3-3	1102	Plug	7-9
STD-1925	Screw	7-7	1182-B3	Spark Plug	4-9
STD-1930	Hose	2-4	1182-B6	Spark Plug	4-9
STD-1957	Bolt	7-9	1182-D4	Spark Plug	4-9
STD-1968	Bolt	7-1	1182-U5	Spark Plug	4-9
STD-2043	Nut	7-3	1540	Plug	2-9
STD-2044	Nut	7-1	8313	Gasket	2-8
STD-2059	Screw	3-3	60009	Key	3-5
STD-2078	Dowel	1-5	60096	Gasket	2-7
STD-2084	Bolt	1-11	60398	Bushing	3-3
STD-2090	Nut	3-3	60430	Cover	2-8
STD-2150	Bolt	2-3	60746	Impeller	2-3
STD-2156	Bolt	5-6	60803	Strap	1-11
STD-2156	Bolt	7-5	60828	Plug	3-1
STD-2167	Screw	1-9	60886	Bolt	5-1
STD-2168	Nut	1-9	61084	Spring	1-7
STD-2180	Hose	3-6	61098	Adapter Assy.	2-8
25C-8	Stud	3-2	61155	Gear	1-5
25C-9	Stud	3-2	61156	Lockplate	1-5
25C-10	Stud	2-9	61163	Gear	4-3
25C-10	Stud	3-2	61166	Thrust Button	2-3
25C-12	Stud	2-1	61166	Thrust Button	2-8
25C-22	Stud	2-1	61173	Gasket	2-9
31C-12	Stud	1-1	61174	Shaft	2-3
31C-12	Stud	2-1	61183	Gasket	2-8
31C-12	Stud	3-2	61247	Cover	3-3
31CD-12	Stud	1-1	61260	Flange	3-3
31C-13	Stud	1-1	61385	Clip	4-5
31C-13	Stud	2-1	61400	Stud	6-1
31C-14	Stud	1-1	61510	Plug	1-5
31C-14	Stud	6-1	61544	Plunger	1-9
31C-14	Stud	6-3	61548	Nameplate	6-1
31C-15	Stud	6-1	61665	Gear	4-1
31C-16	Stud	1-1	61681	Guide	3-2
31C-16	Stud	2-5	62224	Gasket	4-1
31C-17	Stud	2-1	62388	Cap	3-5
31CD-17	Stud	2-1	62417	Plug	2-9
31CD-19	Stud	2-1	62817	Screen Assy.	2-9
38-13	Stud	1-1	62833	Regulator	5-1
38D-17	Stud	1-1	62922	Seal	3-5
38-22	Stud	1-1	65007	Retainer	1-1
50-15	Stud	1-1	65098	Cover	2-7
383-B	Nut	3-3	65321	Gasket	3-3
1028-B	Ball	1-7	65441	Seat	3-5
1102	Plug	1-1	66224	Gasket	6-3
1102	Plug	1-5	66610	Bushing	3-2
1102	Plug	2-1	66670	Bushing	3-2
1102	Plug	2-5	66732	Gasket	3-3
1102	Plug	3-2	66796	Insert	3-2
1102	Plug	6-1	68315	Gasket	2-5
	Plug	6-2	68317	Shaftgear	2-5

NUMERICAL INDEX (Cont).

PART NO.	PART NAME	PAGE NO.	PART NO.	PART NAME	PAGE NO.
68593	Spacer	2-8	72155	Bushing	1-5
68759	Tube Assy.	3-6	72158	Bushing	1-1
68760	Tube Assy.	3-6	72205	Regulator	5-1
68761	Tube Assy.	3-6	72310	Cover Assy.	3-3
68767	Generator	5-5	72351	Screw	4-5
69106	Cover	2-5	72351	Screw	4-7
69260	Insert	3-2	72377	Elbow	2-7
69444	Rocker Assy.	3-3	72377	Elbow	6-3
69510	Housing	2-9	72378	Cover	2-5
69532	Seat	3-5	72380	Cover Assy.	3-3
69551	Gasket	2-5	72413	Fitting	2-9
69602	Connection	6-1	72453	Clamp	4-5
69603	Hose	6-2	72495	Gear	4-1
69675	Connector	2-9	72566	Gear	1-13
69796	Dowel	1-1	72626	Shaft	3-3
70310	Seal	3-5	72706	Insert	3-2
70419	Bracket	5-2	72709	Screw	3-3
70455	Gasket	1-8	72710	Cover	3-3
70484	Screen	6-1	72801	Counterweight Assy.	1-5
70485	Pipe	6-2	72842	Plug	1-3
71098	Carburetor	6-3	72844	Plug	1-3
71140	Fitting	2-9	72877	Body	1-7
71481	Ring	3-3	72962	Thrust Button	2-8
71549	Washer	3-3	72970	Gear Assy.	2-8
71596	Washer	2-5	73061	Body	1-7
71596	Washer	2-8	73245	Eyelet	4-5
71610	Hook	3-6	73249	Washer	1-8
71611	Retainer	3-6	73250	Washer	1-8
71710	Carburetor	6-3	73251	Washer	1-8
71712	Pipe	6-2	73252	Washer	1-8
71713	Pipe	6-2	73346	Flange	6-2
71744	Generator	5-5	73383	Lockplate	5-2
71745	Regulator	5-1	73383	Lockplate	5-3
71894	Seat	3-2	73434	Rod Assy.	3-3
71903	Bushing	1-5	73435	Rod Assy.	3-3
71907	Washer	1-5	73436	Rod Assy.	3-3
71910	Clamp	4-7	73437	Rod Assy.	3-3
71910	Clamp	6-5	73462	Rod Assy.	3-3
71973	Gasket	6-2	73463	Rod Assy.	3-3
72050	Key	3-5	73464	Rod Assy.	3-3
72053	Gasket	2-5	73772	Nozzle Assy.	1-1
72057	Seat	3-2	73810	Bushing	1-5
72058	Seat	3-2	73818	Gasket	2-1
72059	Gasket	1-3	73857	Ring	3-1
72060	Bushing	1-5	73938	Valve	3-5
72061	Bushing	1-5	73971	Clip	4-3
72062	Bushing	1-5	74065	Ring	1-3
72075	Seal	1-7	74068	Ring	1-3
72091	Ring	1-7	74070	Elbow	2-4
72117	Rocker Assy.	3-3	74070	Elbow	6-3

NUMERICAL INDEX (Cont).

PART NO.	PART NAME	PAGE NO.	PART NO.	PART NAME	PAGE NO.
74225	Nipple Assy.	6-5	76119	Shield	2-1
74230	Guide	3-2	76121	Shaft Assy.	1-9
74241	Ring	3-1	76220	Stud	1-11
74291	Regulator	5-1	76242	Bushing	3-3
74323	Strut	5-3	76266	Rocker Assy.	3-3
74324	Bracket	5-3	76374	Crankshaft Assy.	1-5
74325	Link	5-3	76421	Pulley	5-5
74494	Plate	3-3	76529	Plug	1-7
74541	Valve	3-5	76534	Shim	5-3
74636	Rocker Assy.	3-3	76539	Seat	2-9
74637	Bushing	3-3	76728	Sleeve	4-5
74661	Relay	5-1	76734	Zip Strap	4-1
74711	Plug	1-5	76734	Zip Strap	4-3
74863	Pulley	5-5	76734	Zip Strap	4-7
74878	Fan & Baffle Assy.	5-5	76734	Zip Strap	7-9
74880	Alternator Assy.	5-5	76753	Sleeve	4-5
74887	Spacer	3-3	76754	Plate	4-5
74966	Crankshaft Assy.	1-5	76757	Nut	4-5
74968	Crankshaft Assy.	1-5	76852	Grommet	4-5
74996	Gear Assy.	1-9	76853	Magneto Plate	4-5
75030	Support Assy.	1-13	76906	Bracket	5-3
75061	Bolt	3-1	76908	Strut	5-3
75072	Gear Assy.	1-9	76923-48S70-63	Lead Assy.	4-5
75089	Piston	3-1	76961	Clamp	4-1
75153	Adapter Assy.	2-5	77154	Gasket	6-3
75154	Stud	1-1	77159	Sump Assy.	6-1
75165	Clip	2-4	77309	Bushing	1-9
75167	Tube Assy.	2-4	77422	Housing Assy.	2-1
75252	Elbow	2-7	77579	Support Assy.	1-13
75339	Baffle Assy.	3-6	77611	Gasket	3-3
75380	Link	5-3	77627	Elbow	7-9
75413	Piston	3-1	77743	Harness Assy.	4-1
75560	Bushing	1-5	77745	Harness Assy.	4-1
75561	Bushing	1-5	77808	Valve Assy.	1-7
75656	Bushing	1-5	77852	Oil Filter Base Assy.	2-9
75657	Bushing	1-5	77872	Bushing	1-8
75735	Tube	1-3	77874	Gear Assy.	1-8
75736	Tube	1-3	77875	Gear	1-8
75767	Tube	1-3	77997	Housing Assy.	2-1
75888	Stud	2-1	78059	Relay	5-1
75906	Gasket	3-3	78060	Relay	5-1
75941	Identification Tape	4-5	78290	Plunger Assy.	3-5
75944	Valve Assy.	2-9	78368	Pin	1-9
75965	Clamp	4-3	78524	Socket	3-5
76026	Belt	5-1	78528	Body Assy.	2-3
76028	Link	5-2	78539	Cable Assy.	4-5
76036	Gasket	3-3	78626	Tube Assy.	1-3
76077	Guide	3-2	78717	Camshaft	1-5
76097	Camshaft	1-5	78914	Connection	6-1
76110	Housing Assy.	2-1	78915	Sump Assy.	6-1
76111	Housing Assy.	2-1			
76118	Spacer	1-9			